

Linee di ricerca

- **Frane** – Descrizione dei meccanismi di innesco ed evolutivi di aree in frana;
- **Calanchi** – Aspetti evolutivi dei versanti calanchivi;
- **Deformazioni Gravitative Profonde di Versante (DGPV)**
- **Superfici marine terrazzate** – Geologia e geomorfologia dell'area interna del golfo di Taranto caratterizzata da estese superfici sub-pianeggianti interrotte da scarpate.
- **Geositi e percorsi geoturistici**



La frana di Pietra Maura Marsico Nuovo (Potenza)

Mario Bentivenga & Giuseppe Palladino

Collaborazione:
Università di Bari, Università di Cassino, INGV & CNR

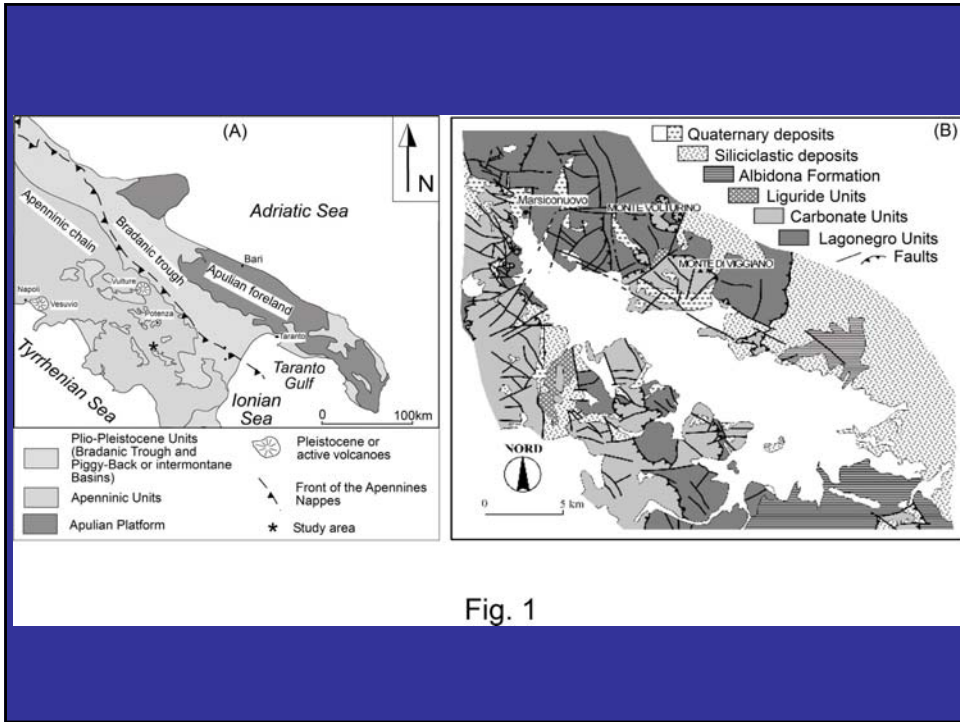
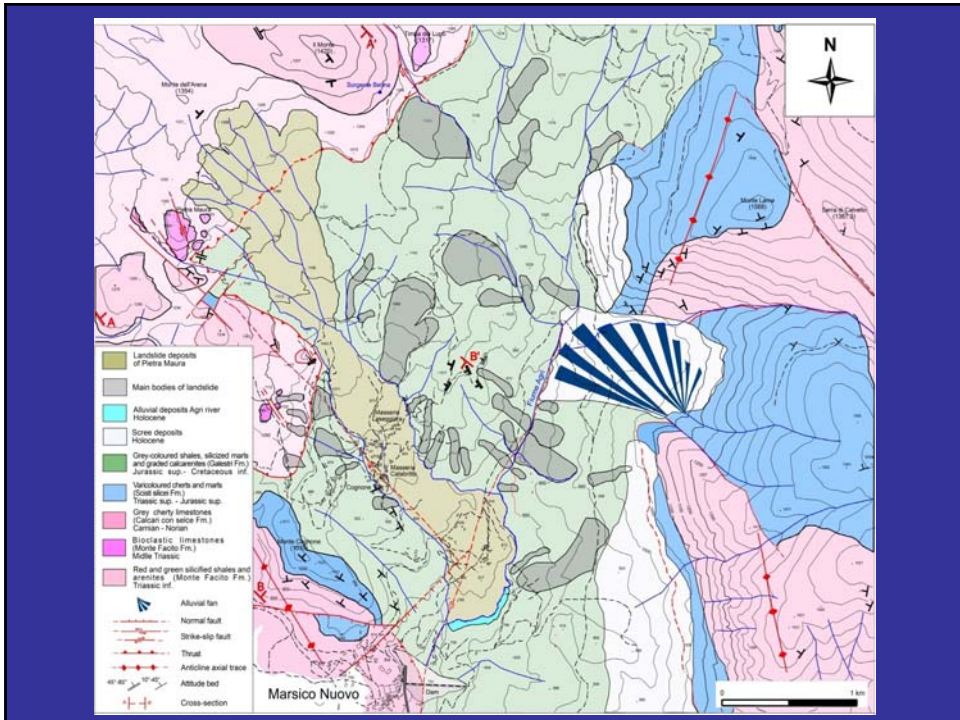
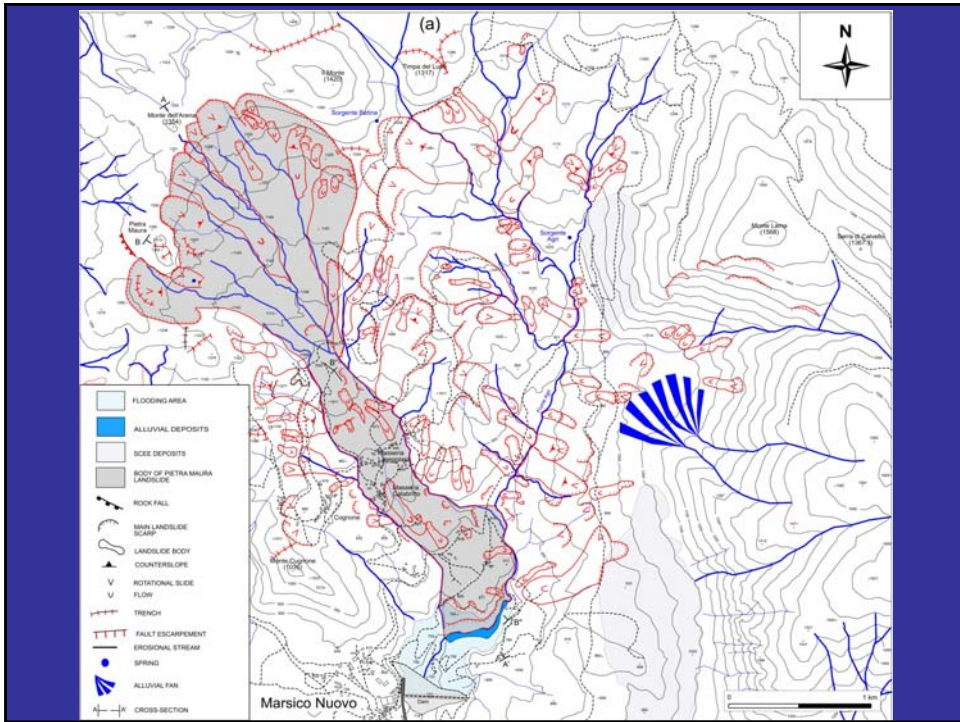
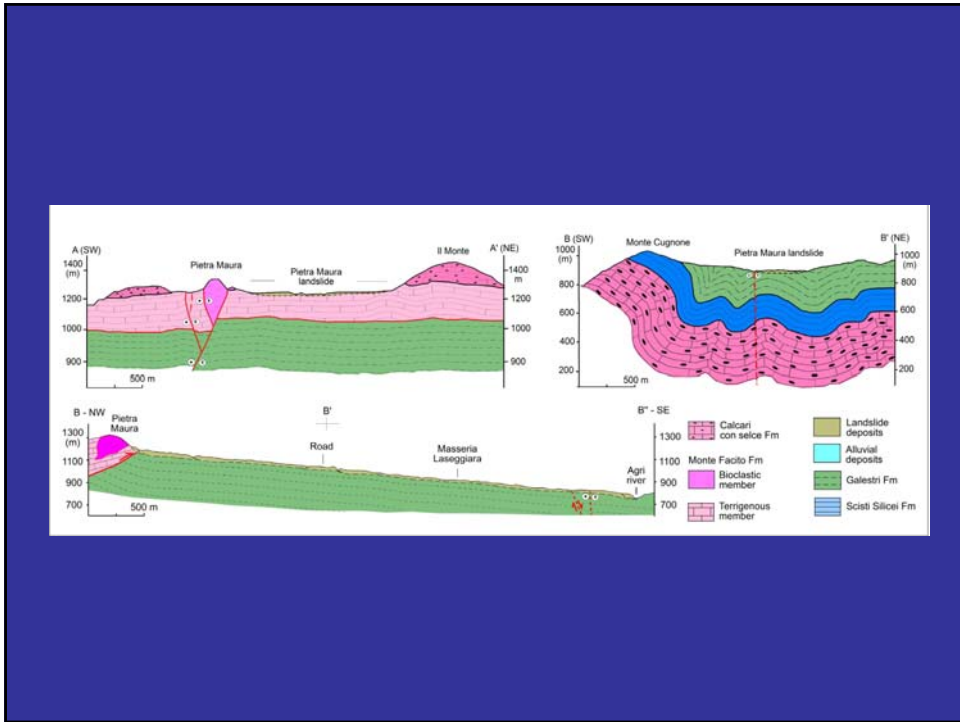
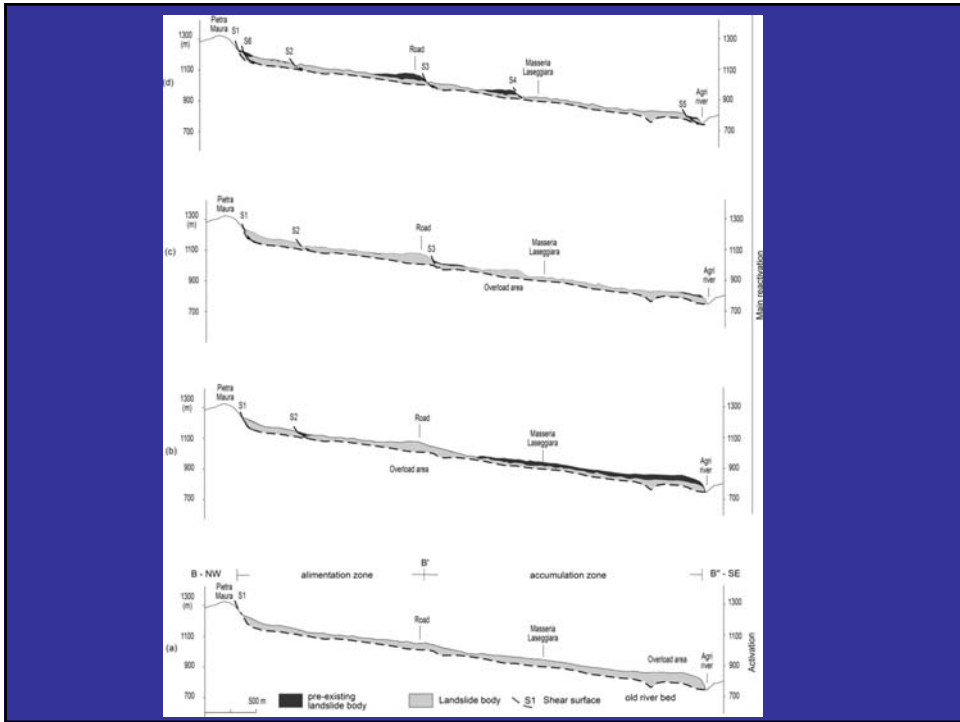
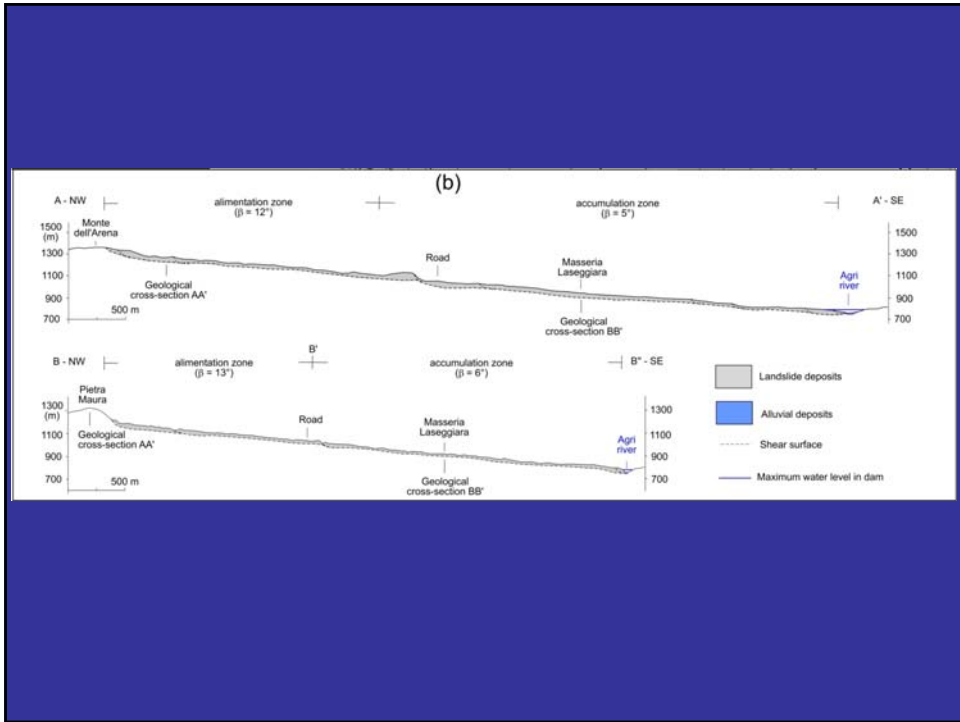


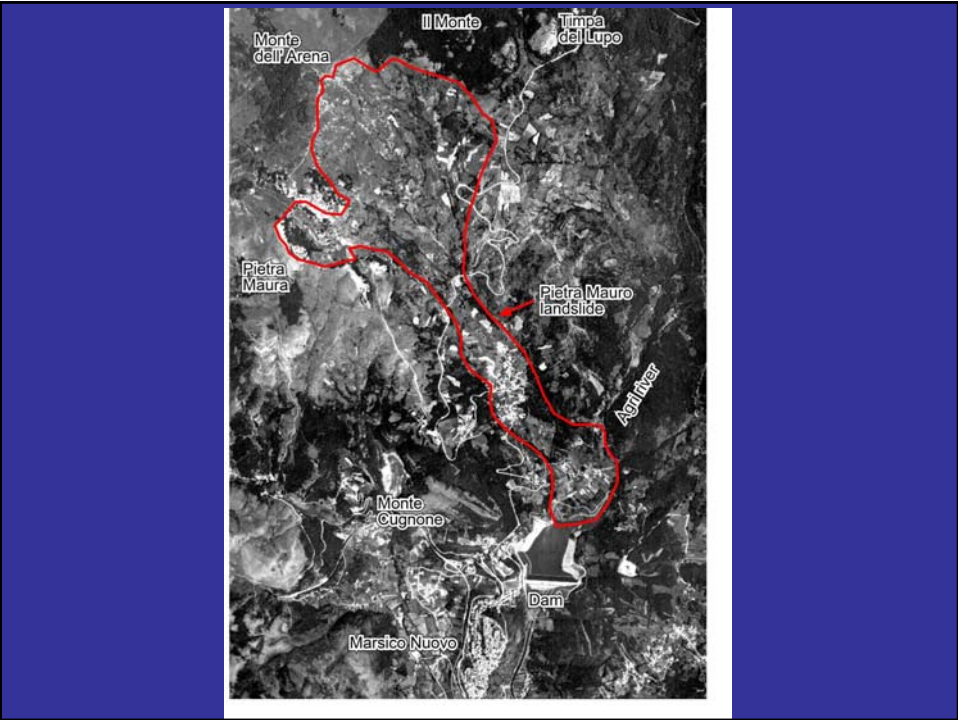
Fig. 1









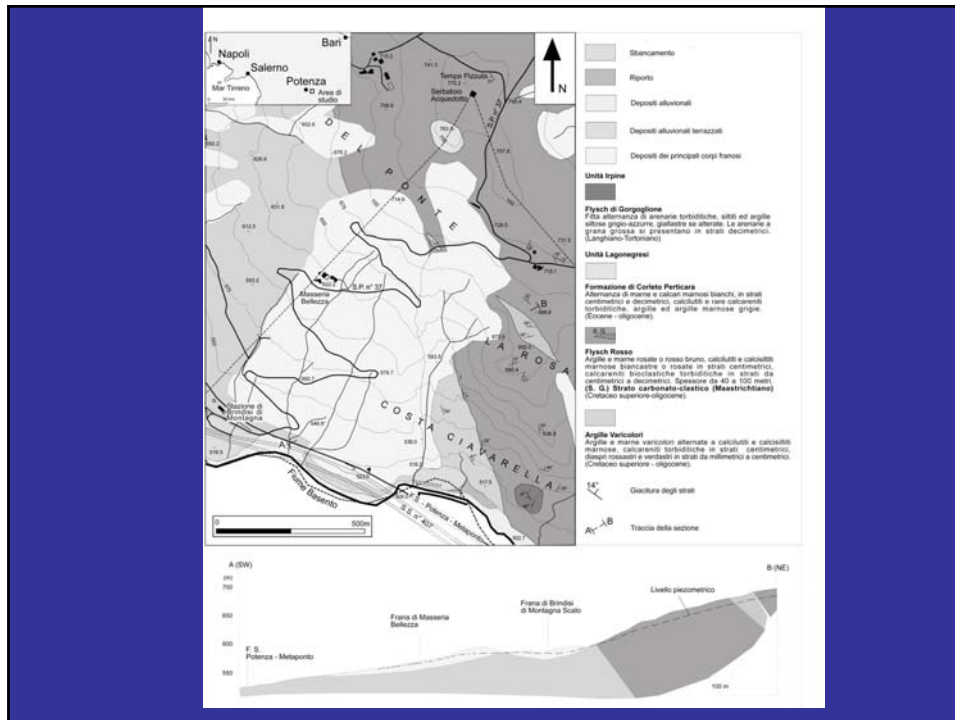


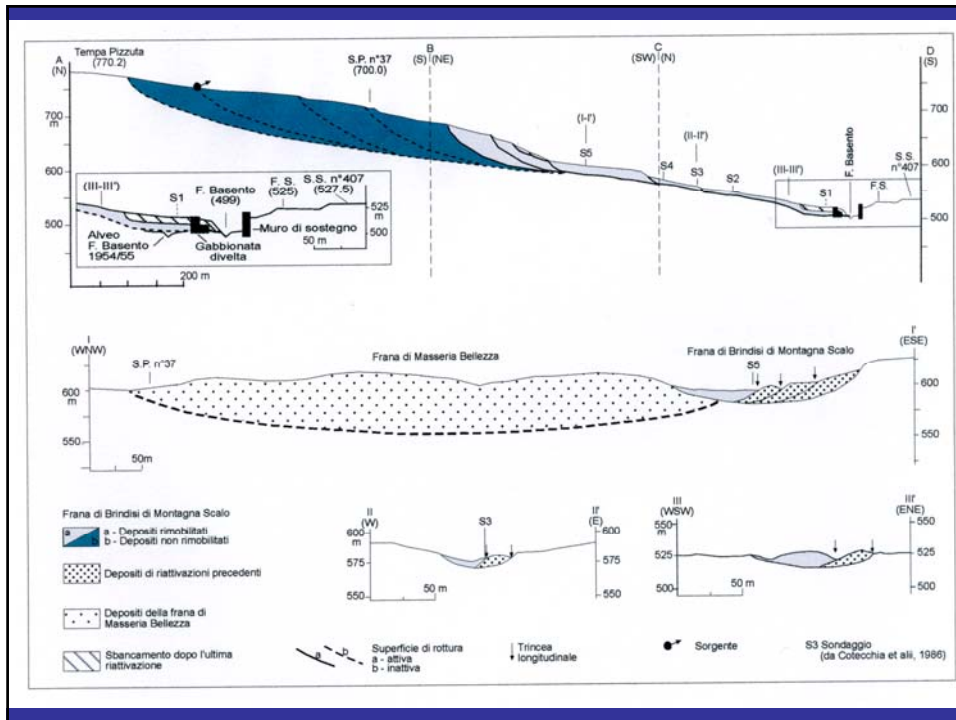
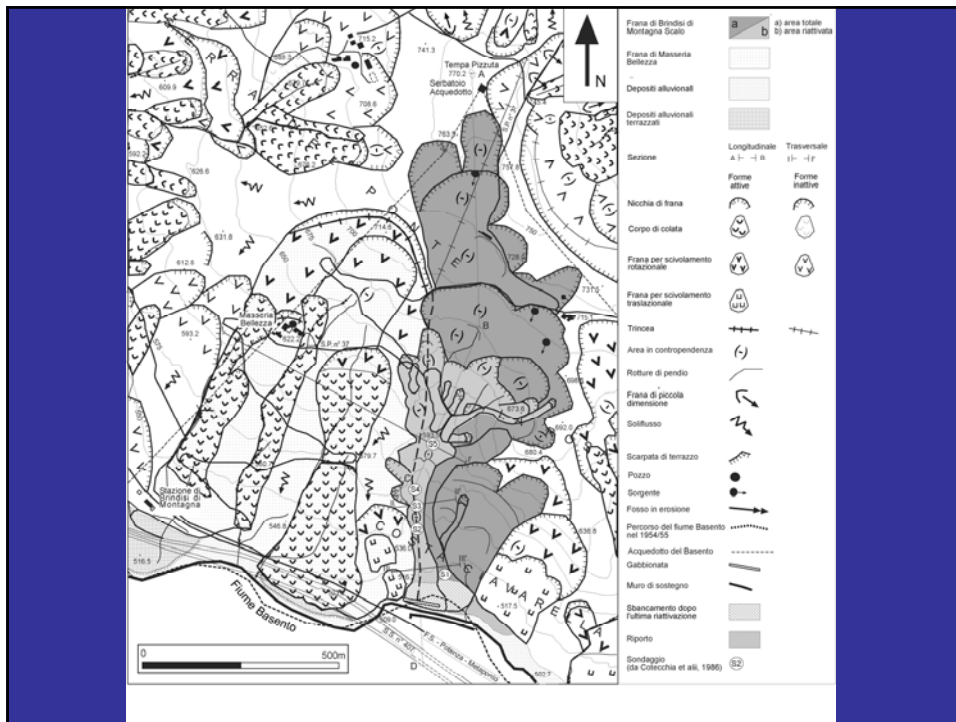


La frana di Brindisi di Montagna Scalo (Potenza)

Mario Bentivenga, Vincenzo De Luca, Salvatore Grimaldi & Giuseppe Palladino

Collaborazione:
Università di Bari, Università di Siena & CNR







Si stanno realizzando:

- Misure di resistività elettrica (Tomografie)
- Misure del Potenziale Spontaneo

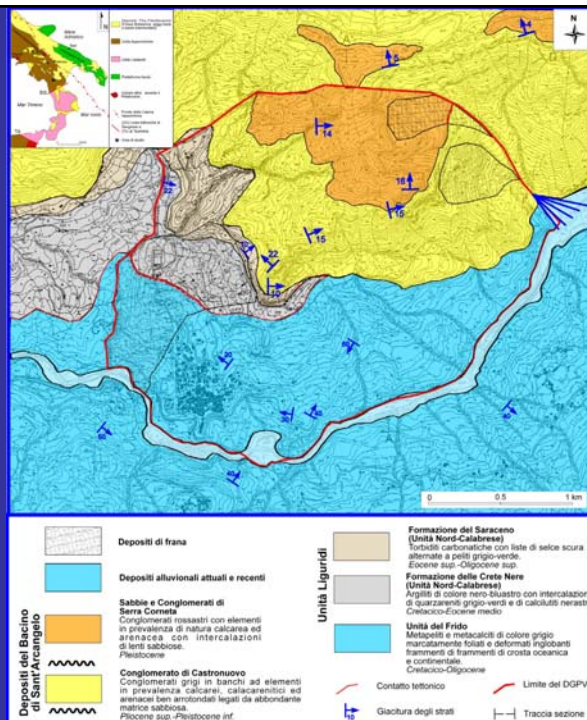


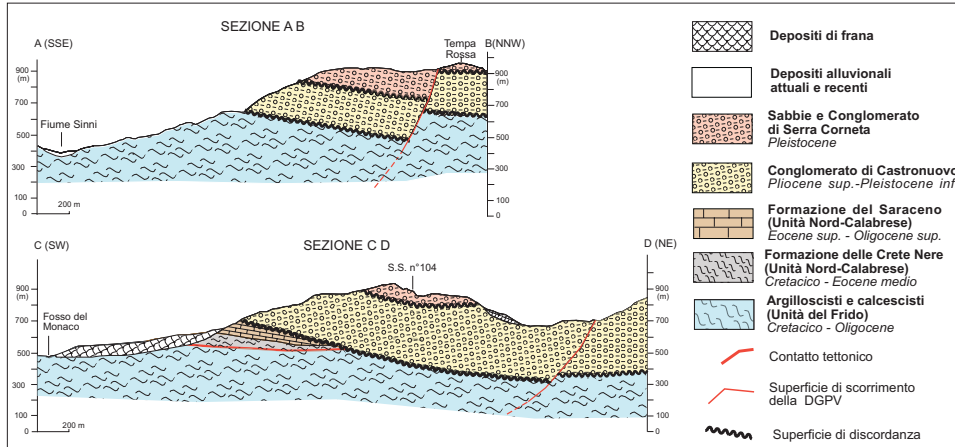
La deformazione gravitativa profonda di Episcopia (Potenza)

Mario Bentivenga, Salvatore Laurita, Giuseppe Palladino & Giacomo Prosser

Collaborazione:
Università di Roma "la Sapienza", Università di Cassino e INGV

Carta Geologica





Sabbie e Conglomerati di Serra Corneta
Pleistocene medio



Conglomerati di Castronuovo – *Pliocene sup. – Pleistocene inf.*

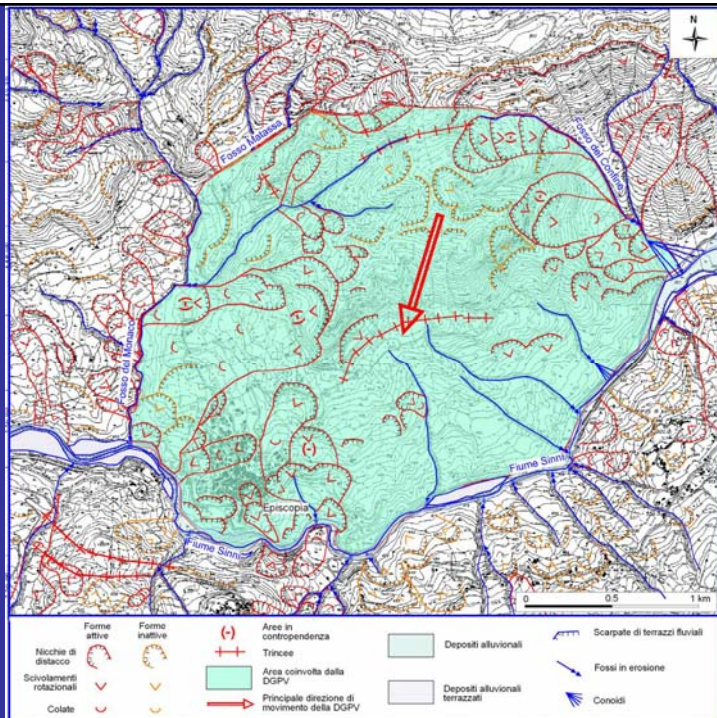


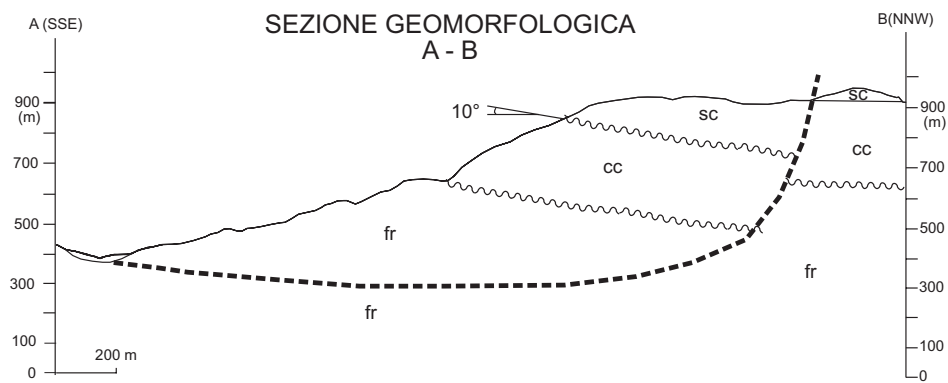
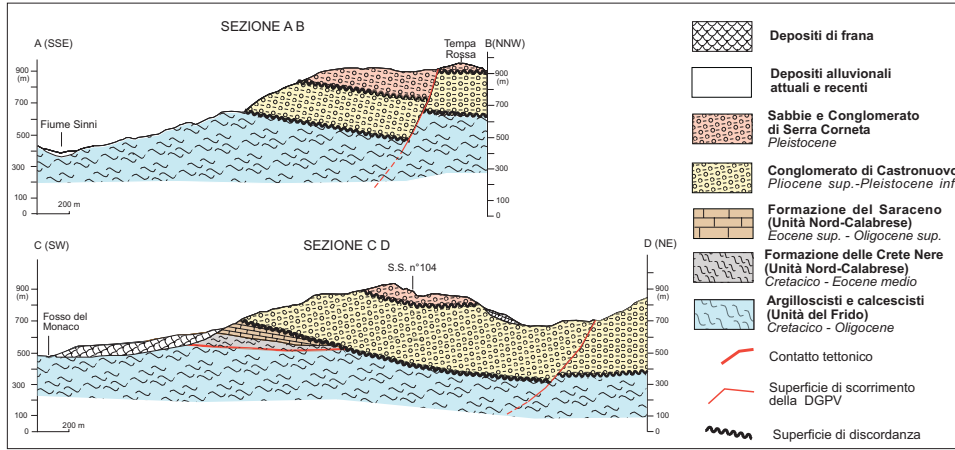
Argilloscisti dell'Unità del Frido – *Cretacico-Oligocene*

Formazione del Saraceno
Eocene sup.-Oligocene sup.



Carta
 Geomorfologica



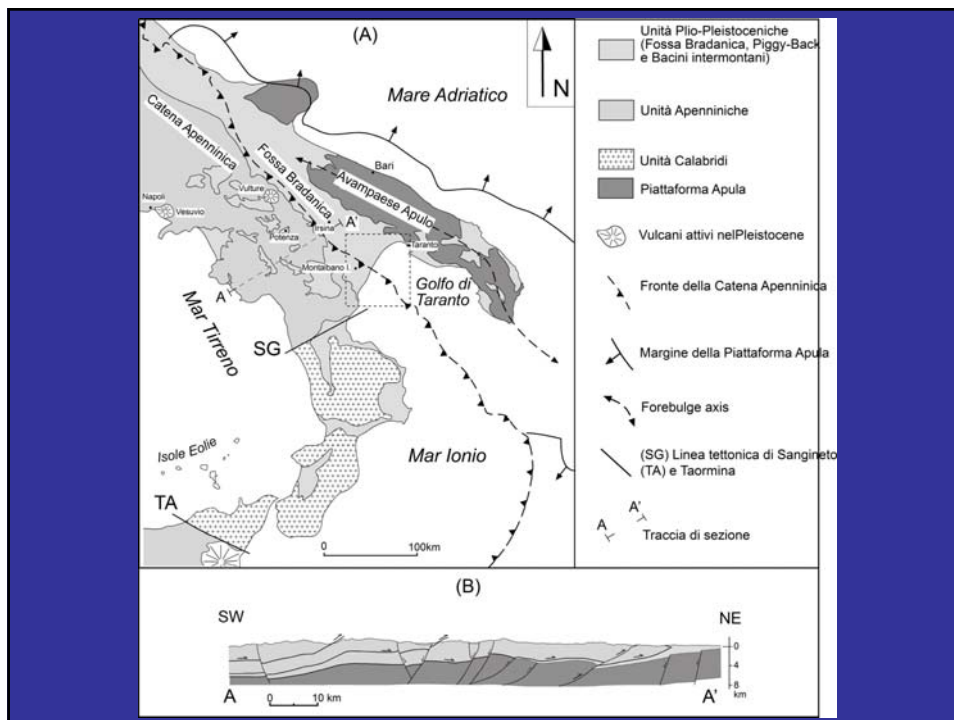


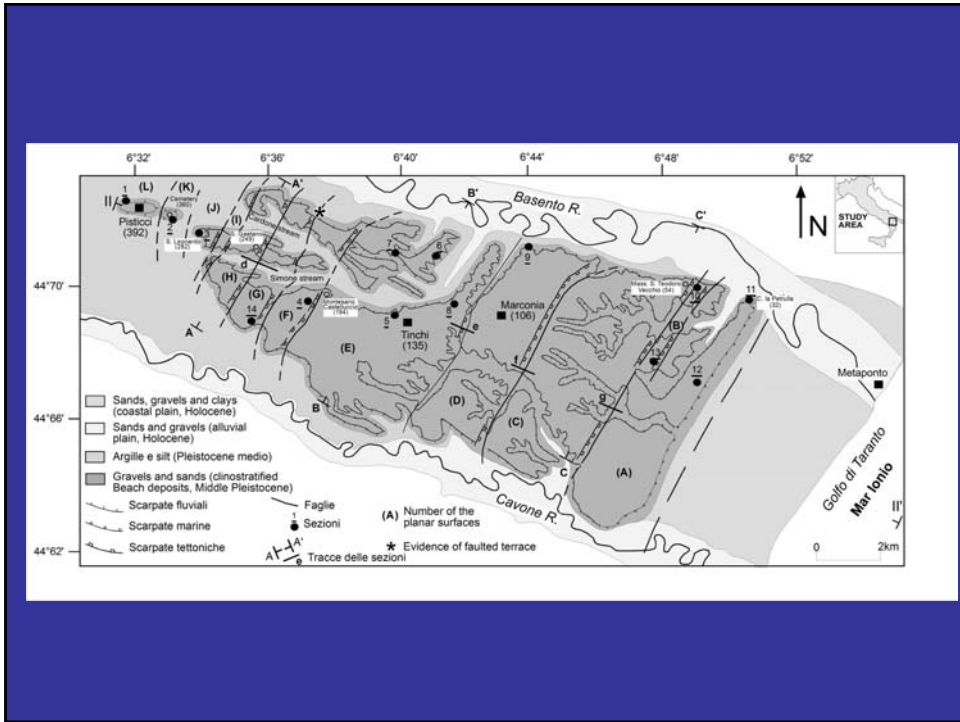
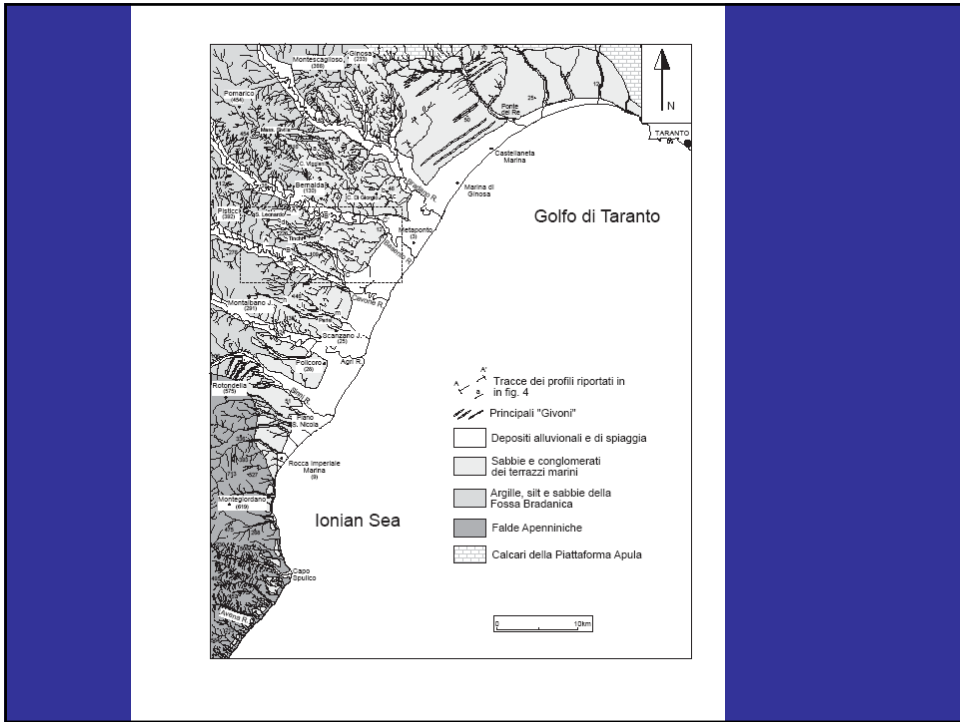


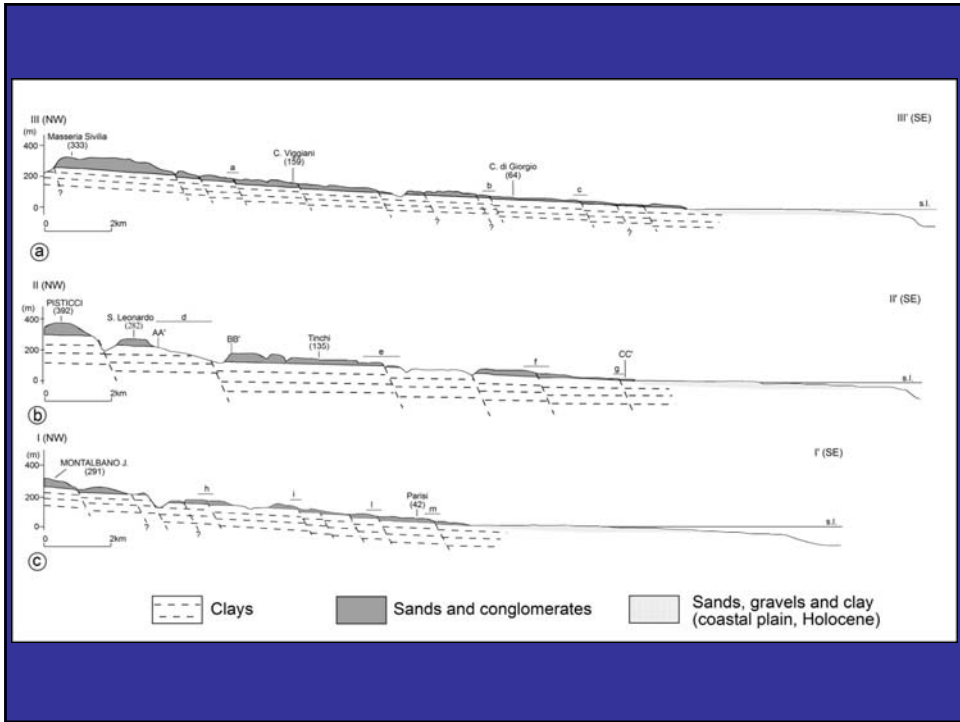
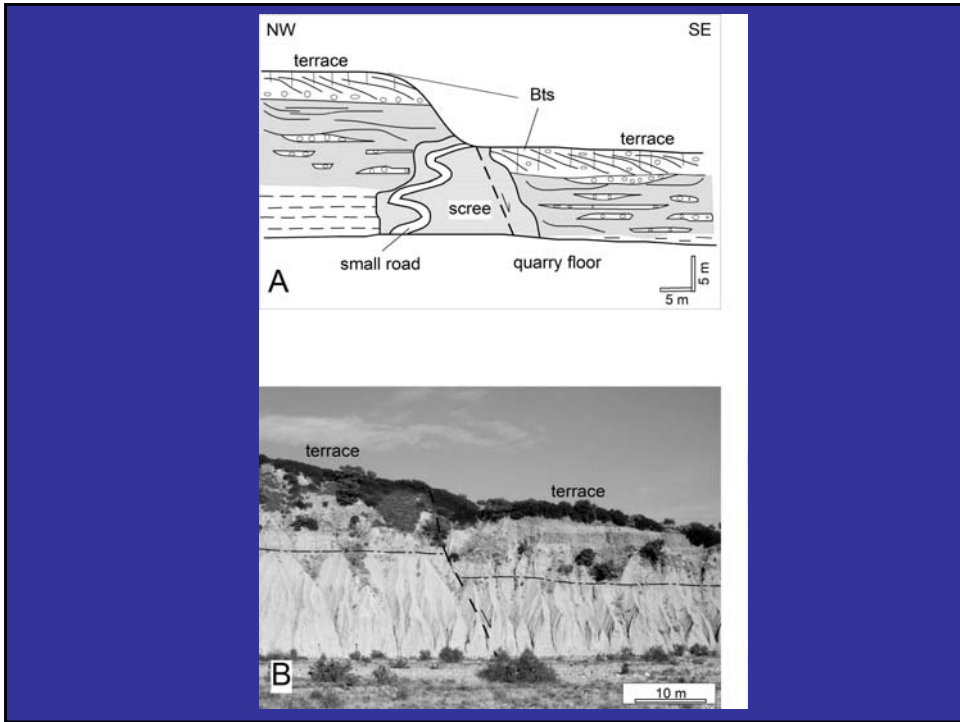
DEFORMAZIONI DISTENSIVE RECENTI NELL'ENTROTERRA DEL GOLFO DI TARANTO

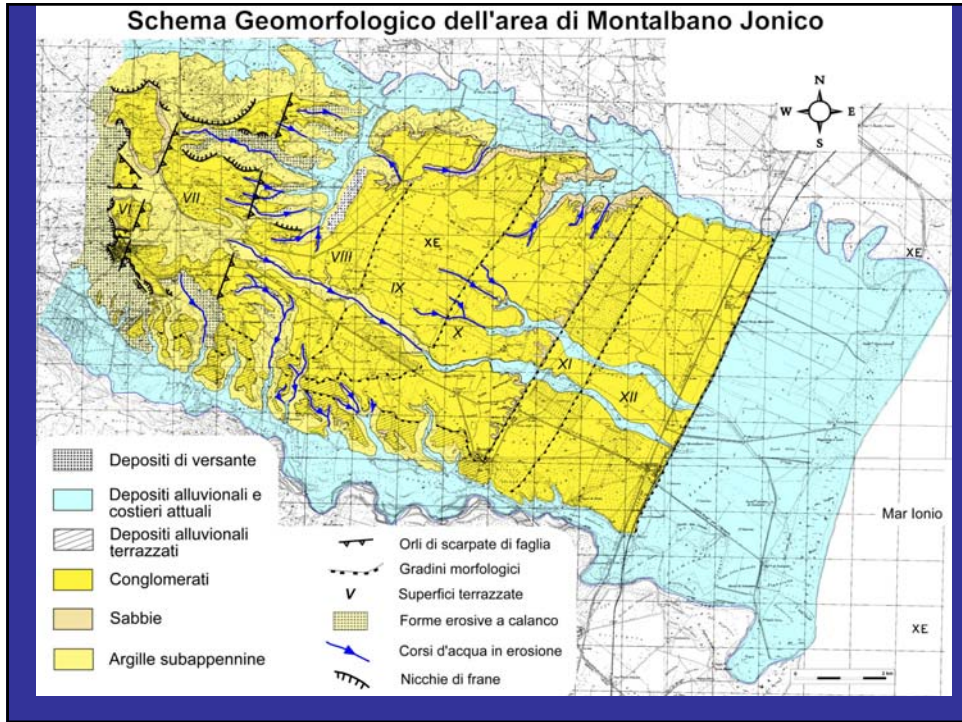
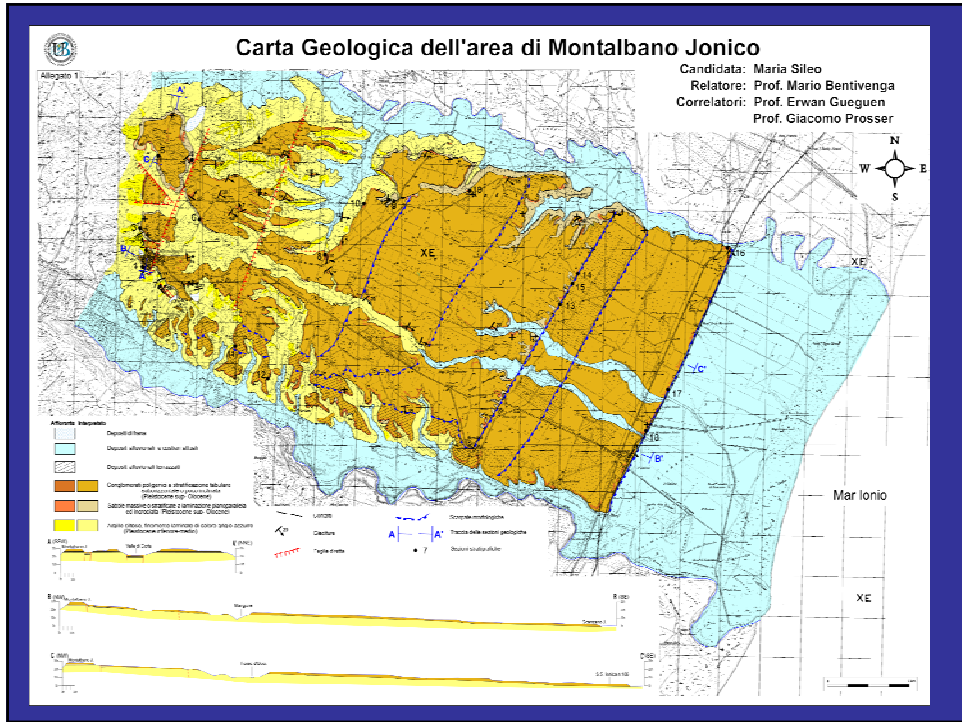
MARIO BENTIVENGA & GIACOMO PROSSER

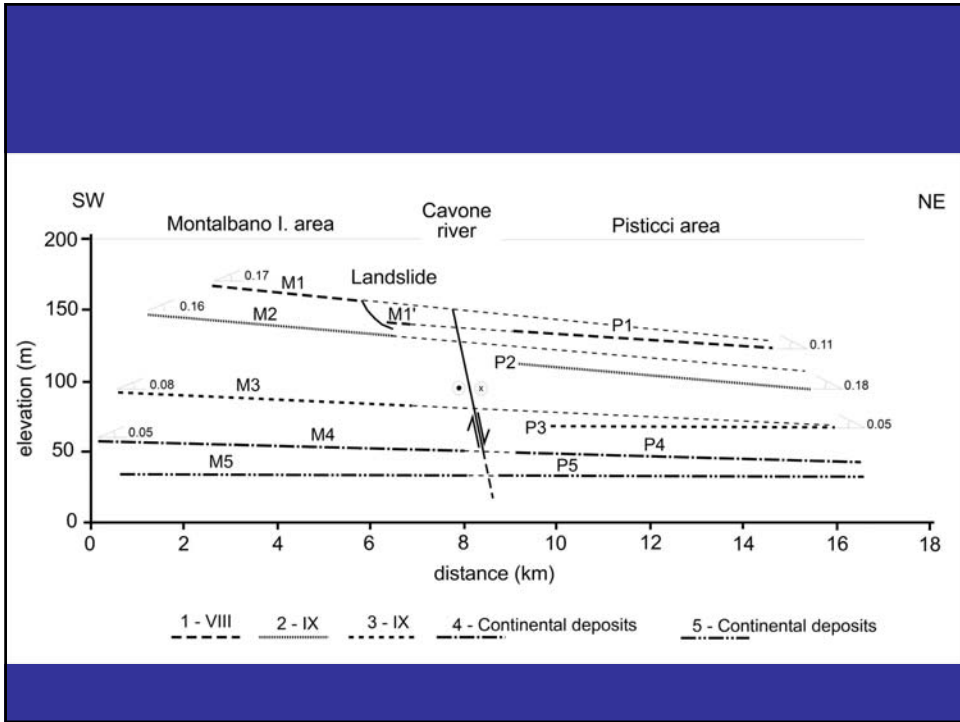
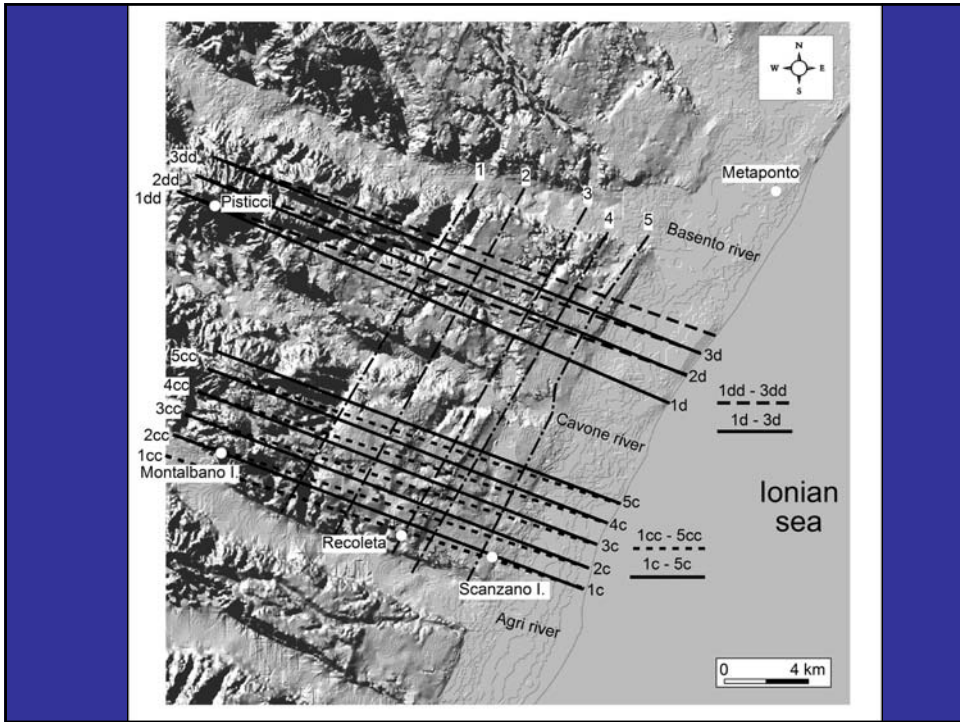
Collaborazione: Università degli Studi di Siena & CNR

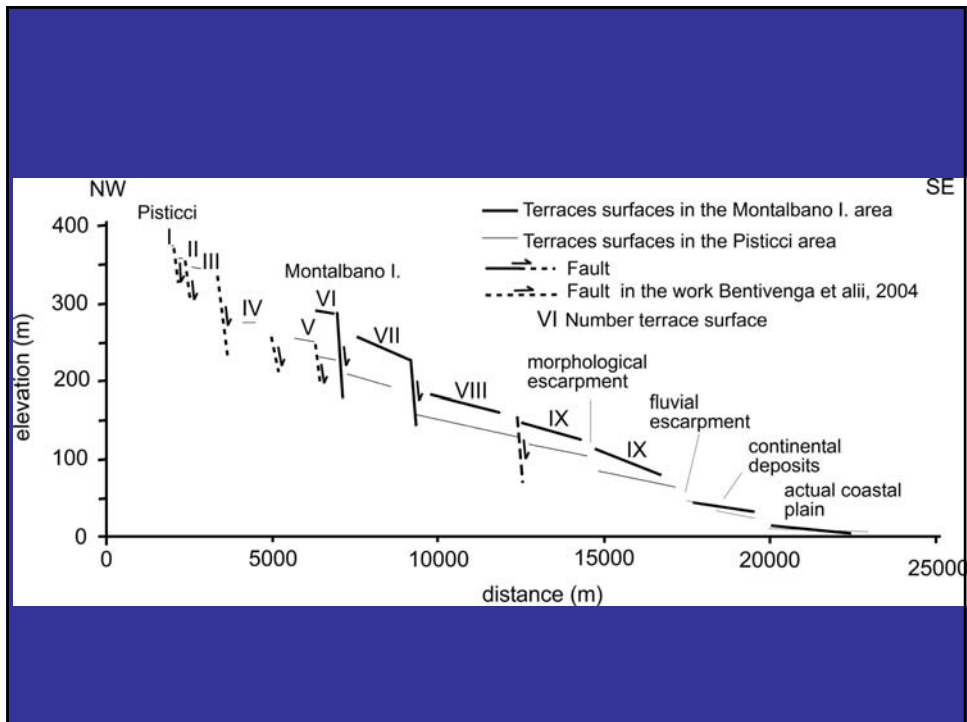


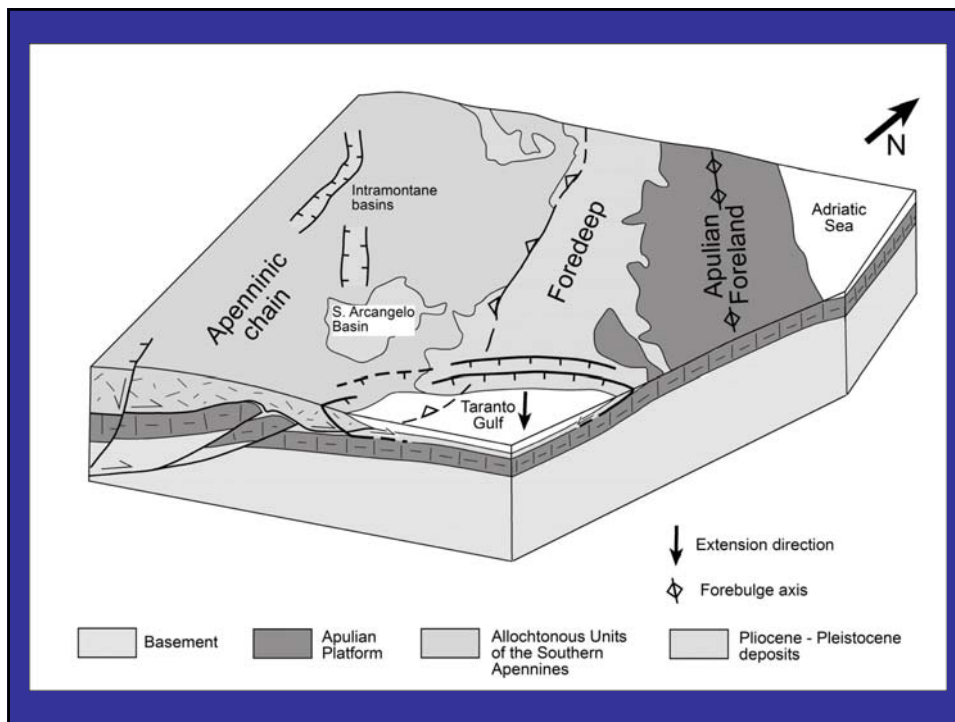












Università degli Studi della Basilicata

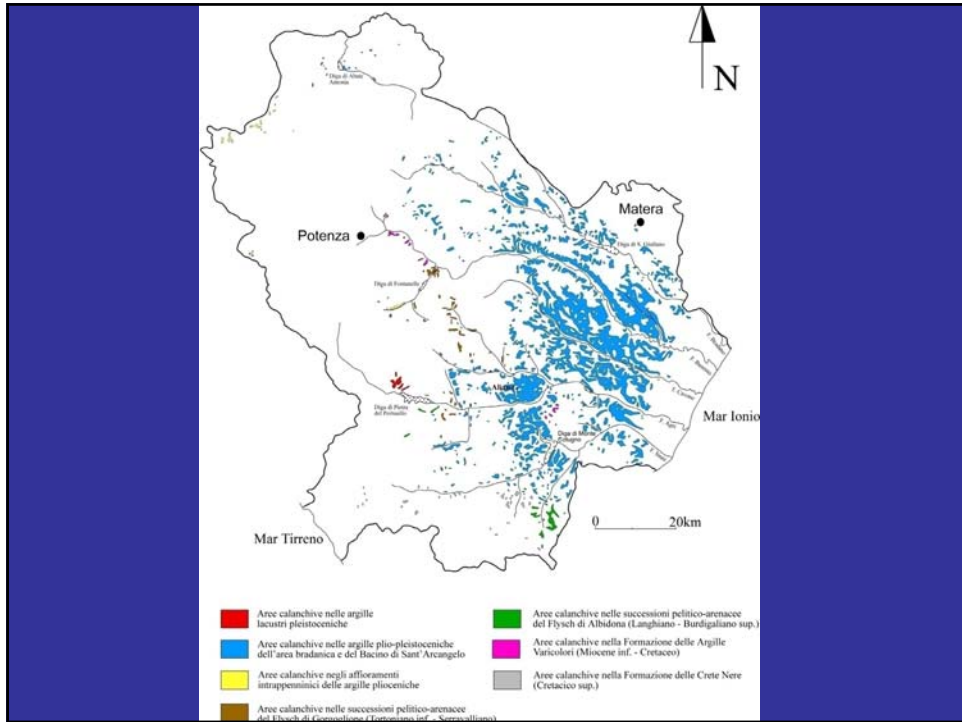


Dipartimento di Scienze Geologiche

Aspetti evolutivi delle aree calanchive in Basilicata

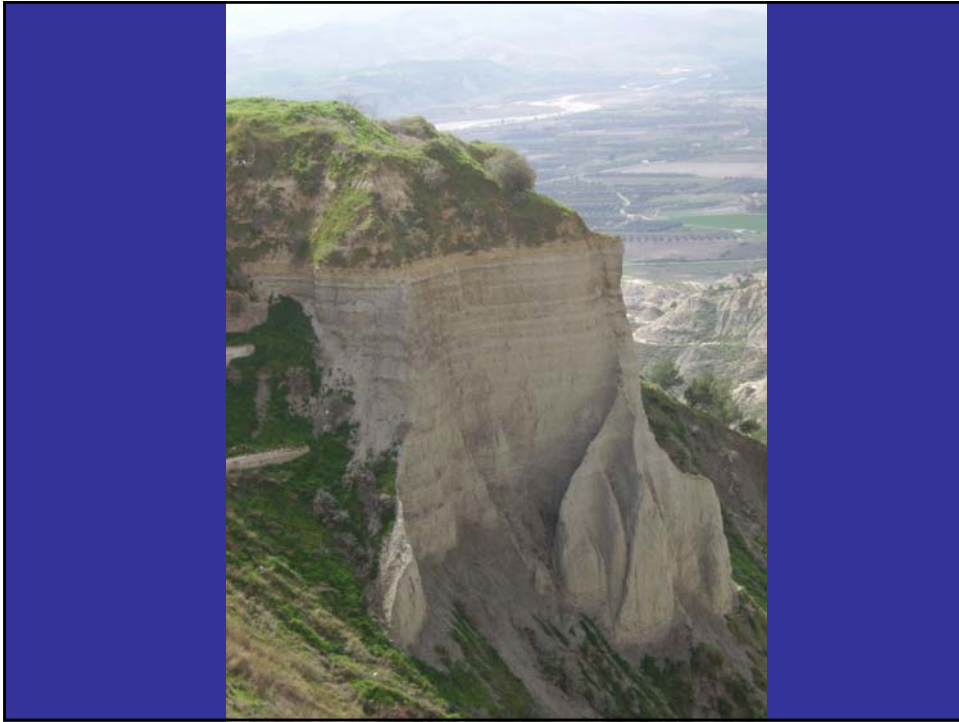
Bentivenga M., Palladino G. & Prosser G.

Collaborazione:
Università di Bari, Università di Siena &
Middlesex University, UK



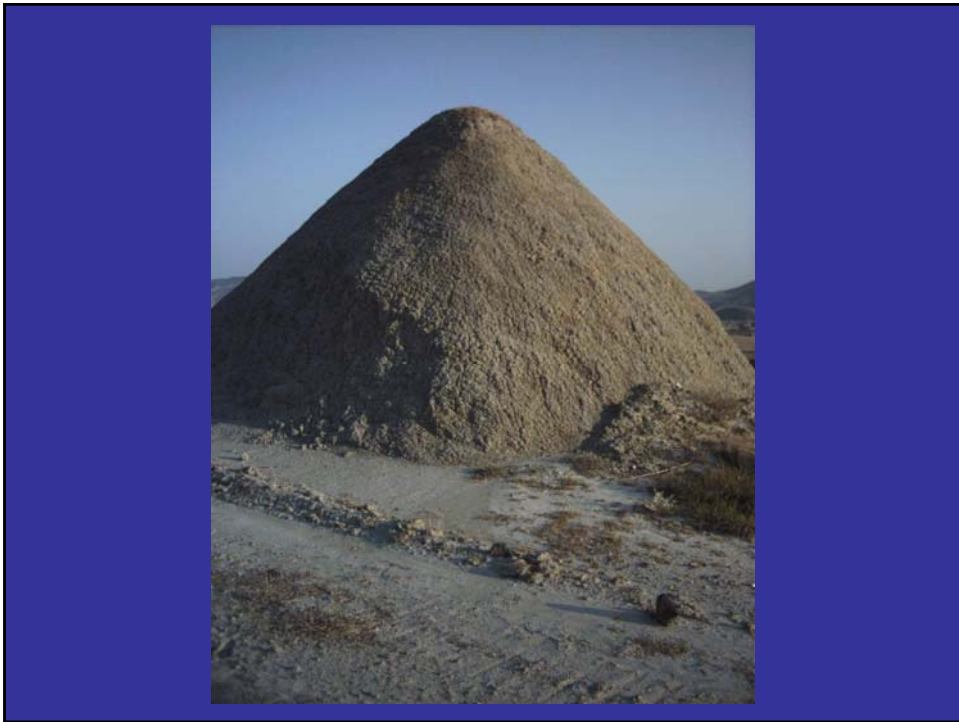
Rilievi ad alta energia

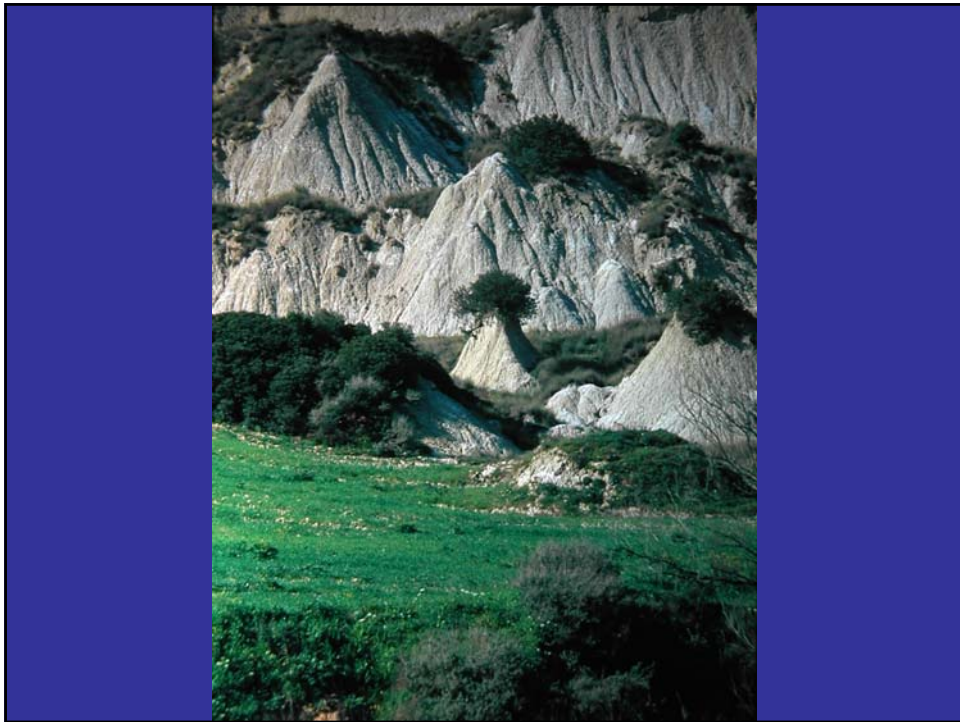




Rilievi ad energia medio-bassa

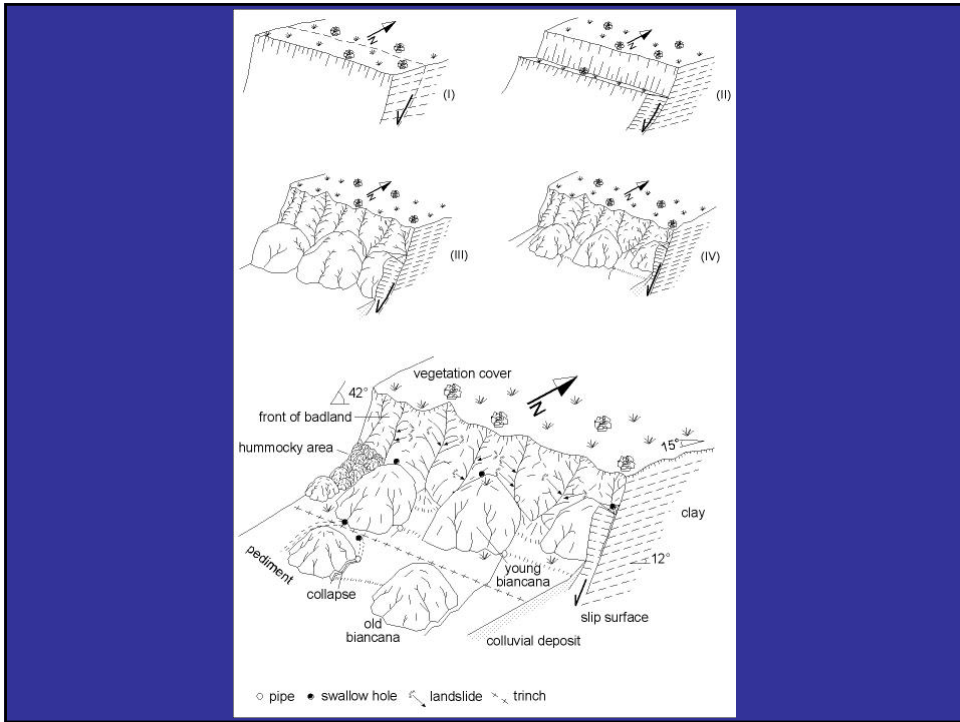






Monoclinali







STUDIO DI GEOSITI ED INDIVIDUAZIONE DI ITINERARI GEOTURISTICI

Mario Bentivenga, Giuseppe Palladino & Giacomo Prosser

Collaborazione:
Università di Genova,
Amministrazione provinciale di Potenza,
APT Basilicata & SIGEA

Geosito: beni geologici e geomorfologici di un territorio quali elementi di pregio scientifico ed ambientale del patrimonio paesaggistico.





