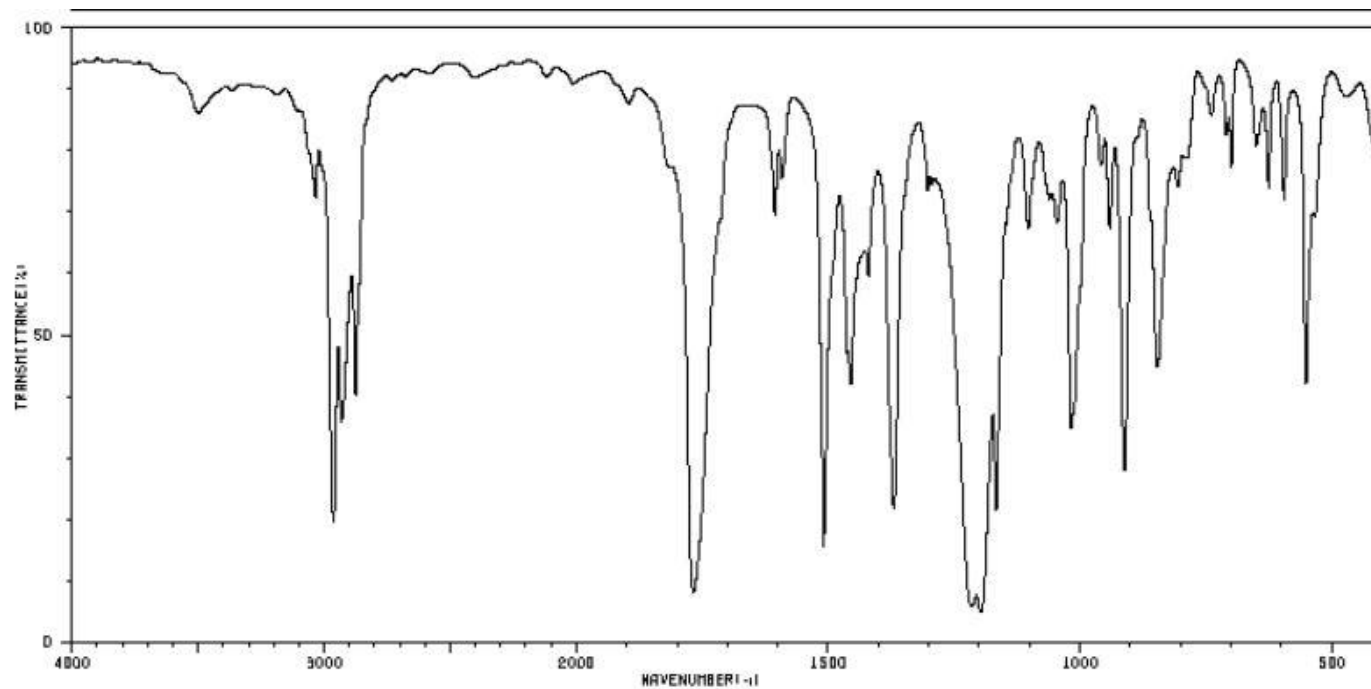


Analisi Elementare: C, 74.97; H, 8.39;

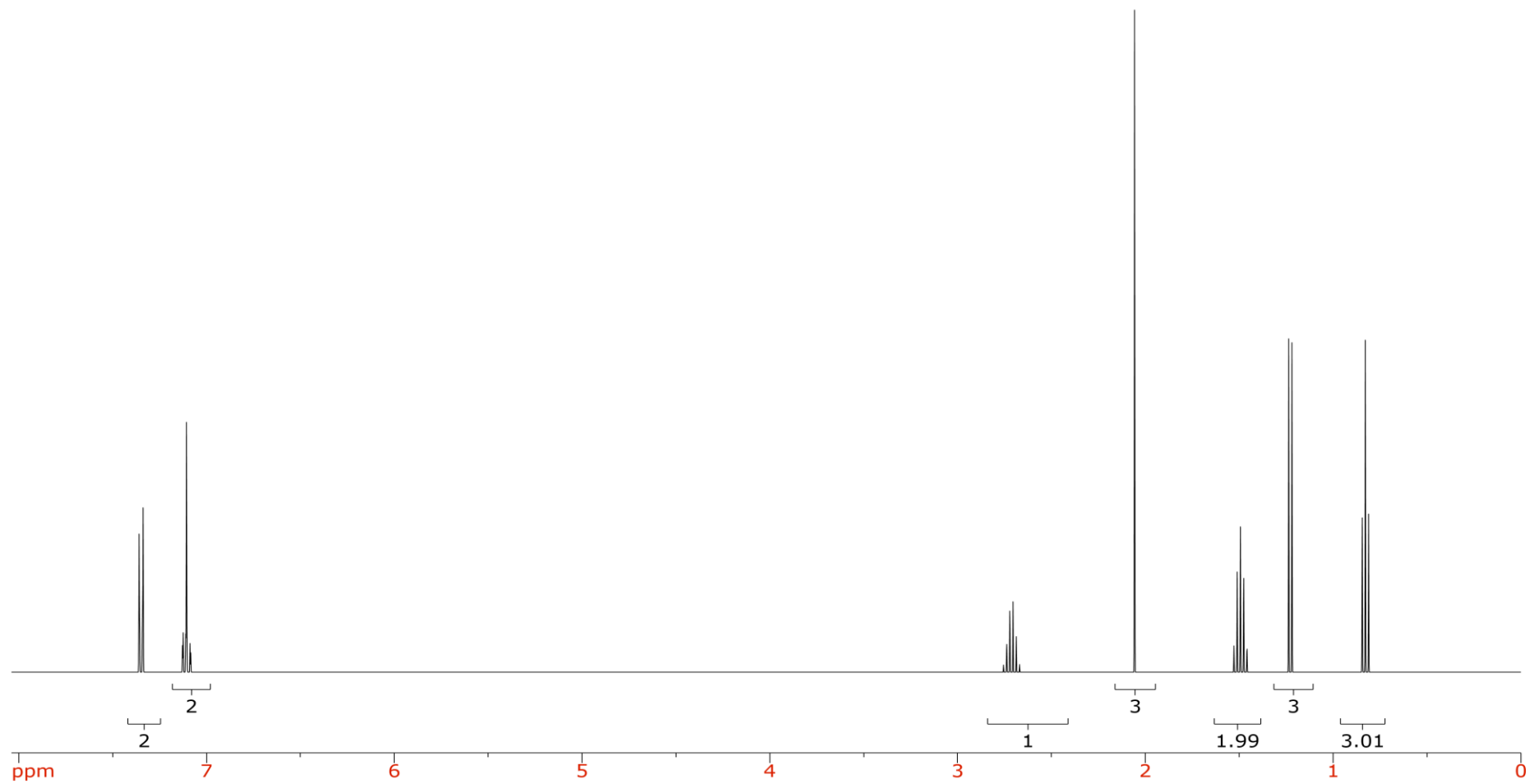
Massa esatta: m/z 192.1150 (100.00%) 193.1184 (13.24%)

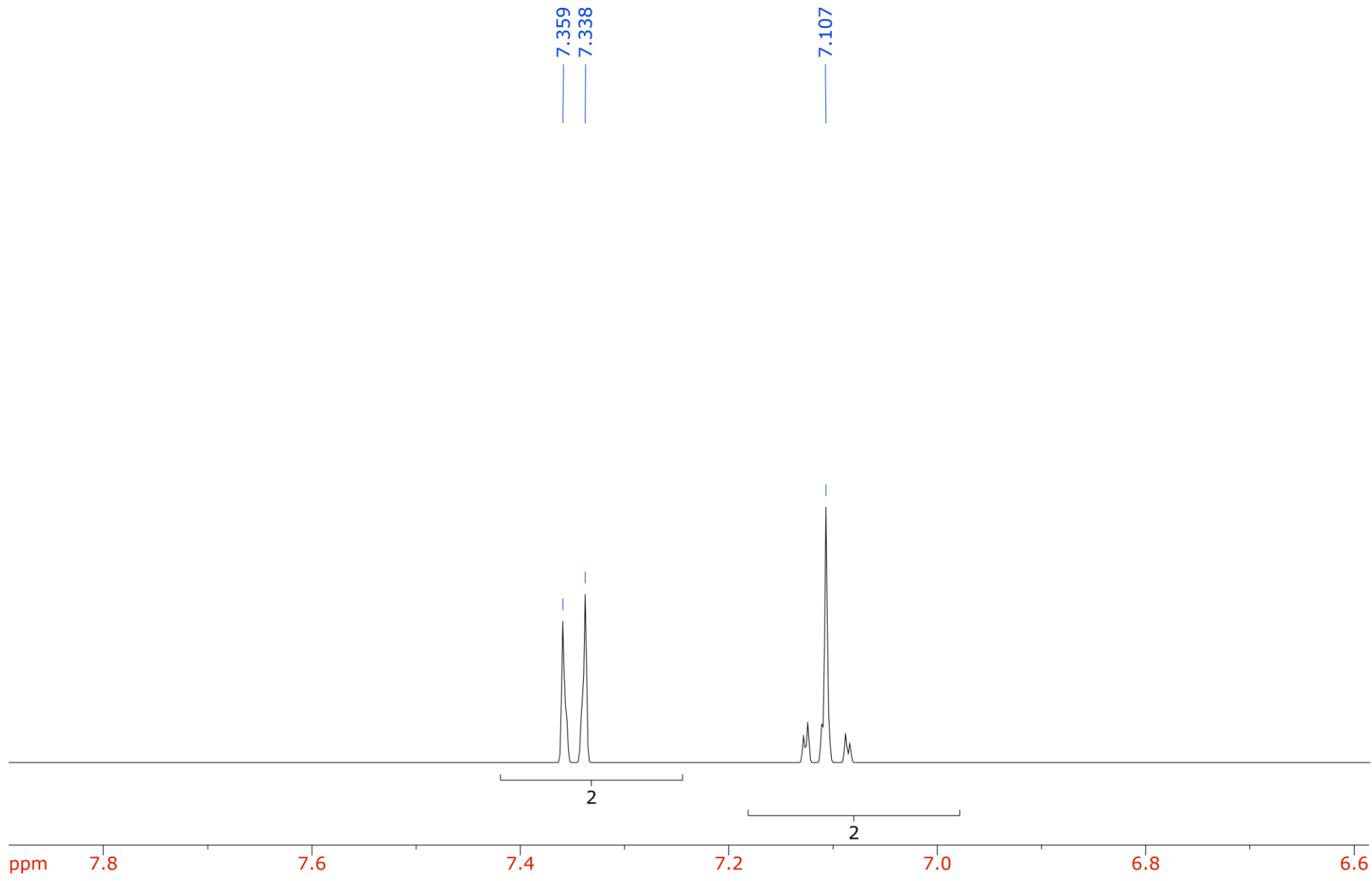
Spettro IR (KBr)

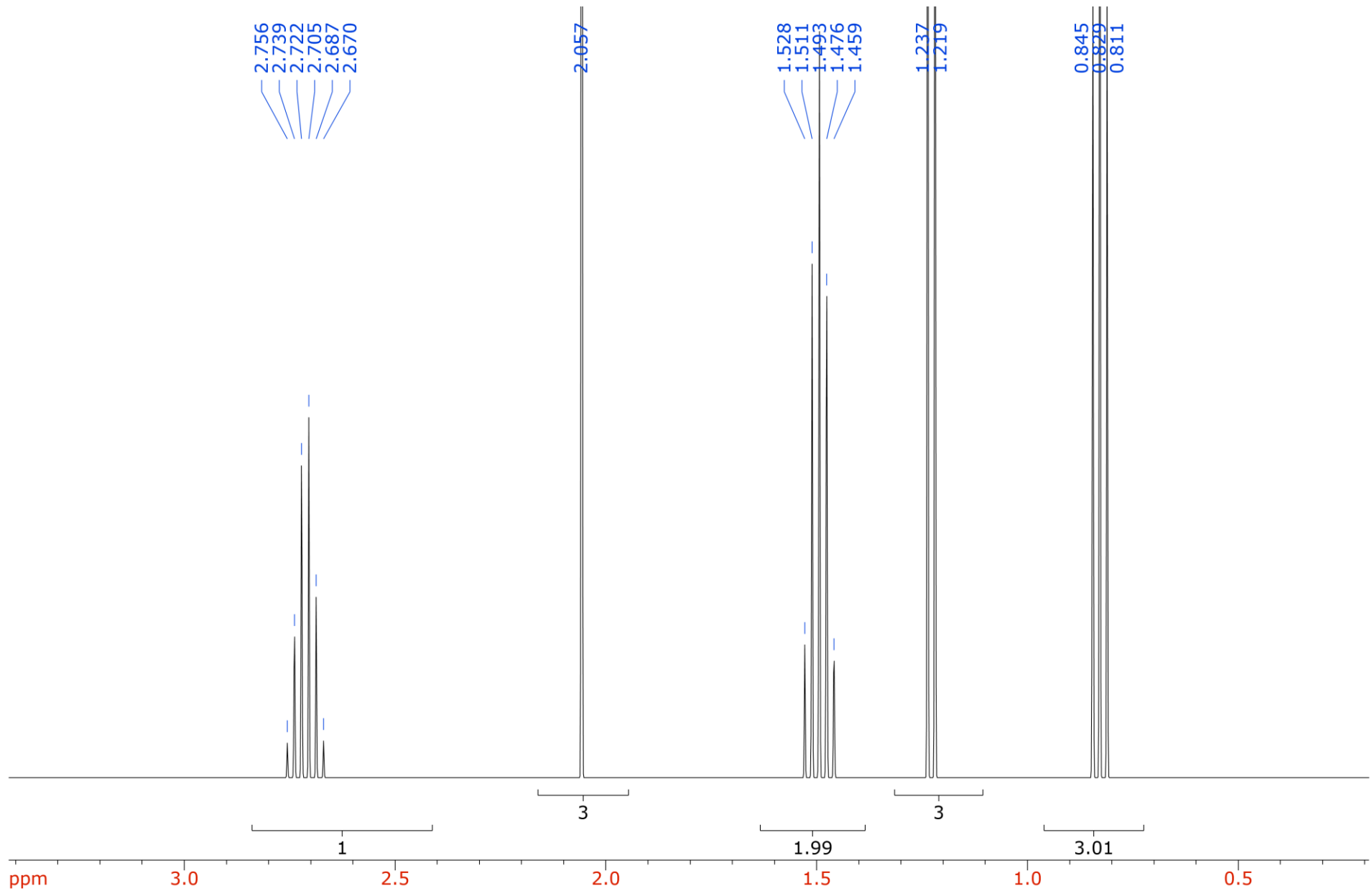


3035	70	1692	72	1216	6	969	74	710	79
2962	18	1509	14	1197	4	941	64	700	74
2931	34	1462	44	1167	20	912	26	651	77
2874	38	1466	41	1103	64	847	49	626	70
1896	84	1420	57	1061	70	805	70	595	68
1767	7	1370	20	1046	66	745	64	552	39
1606	66	1304	70	1018	33	738	81	534	66

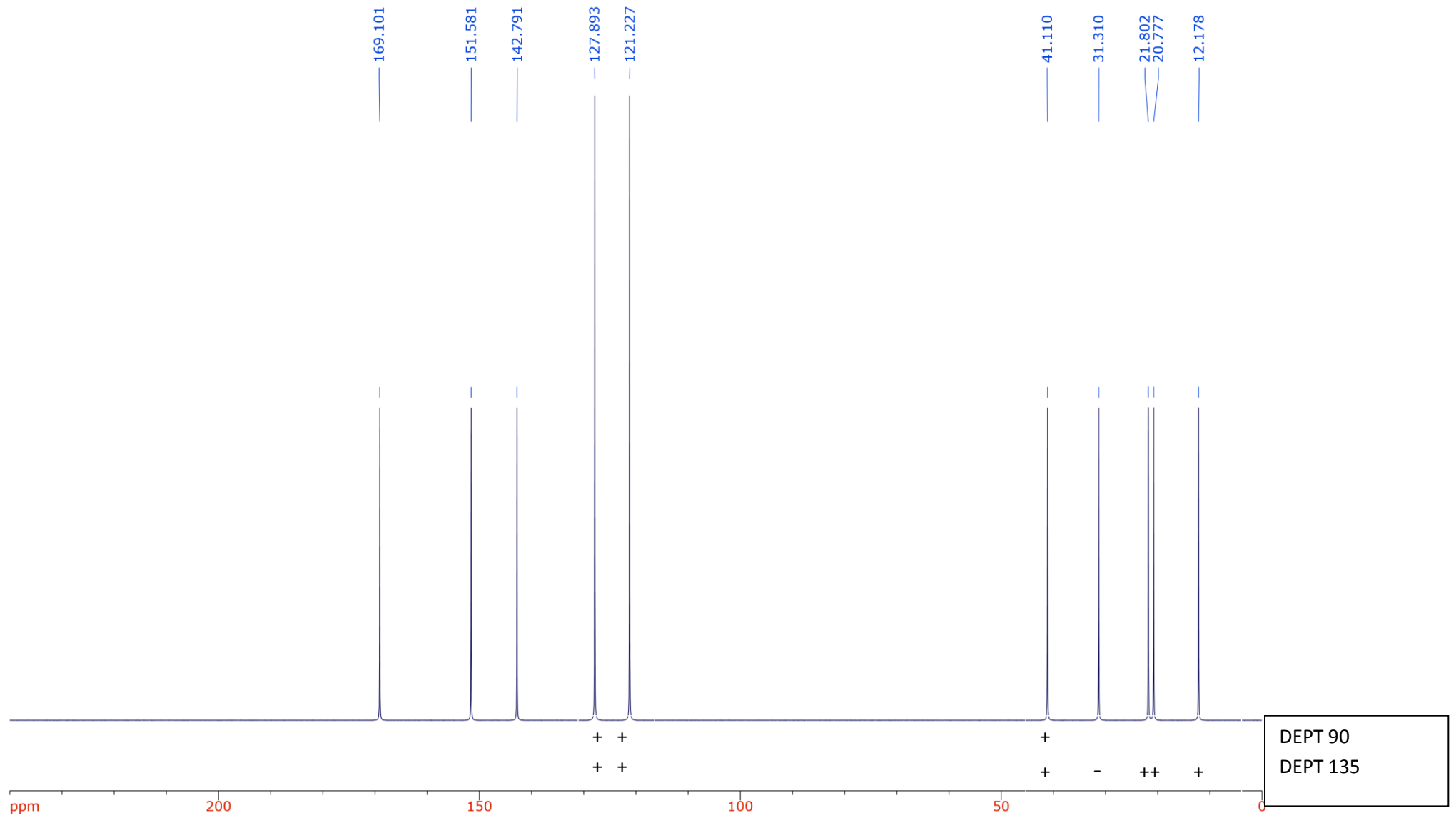
$^1\text{H-NMR}$ (400 MHz, CDCl_3)



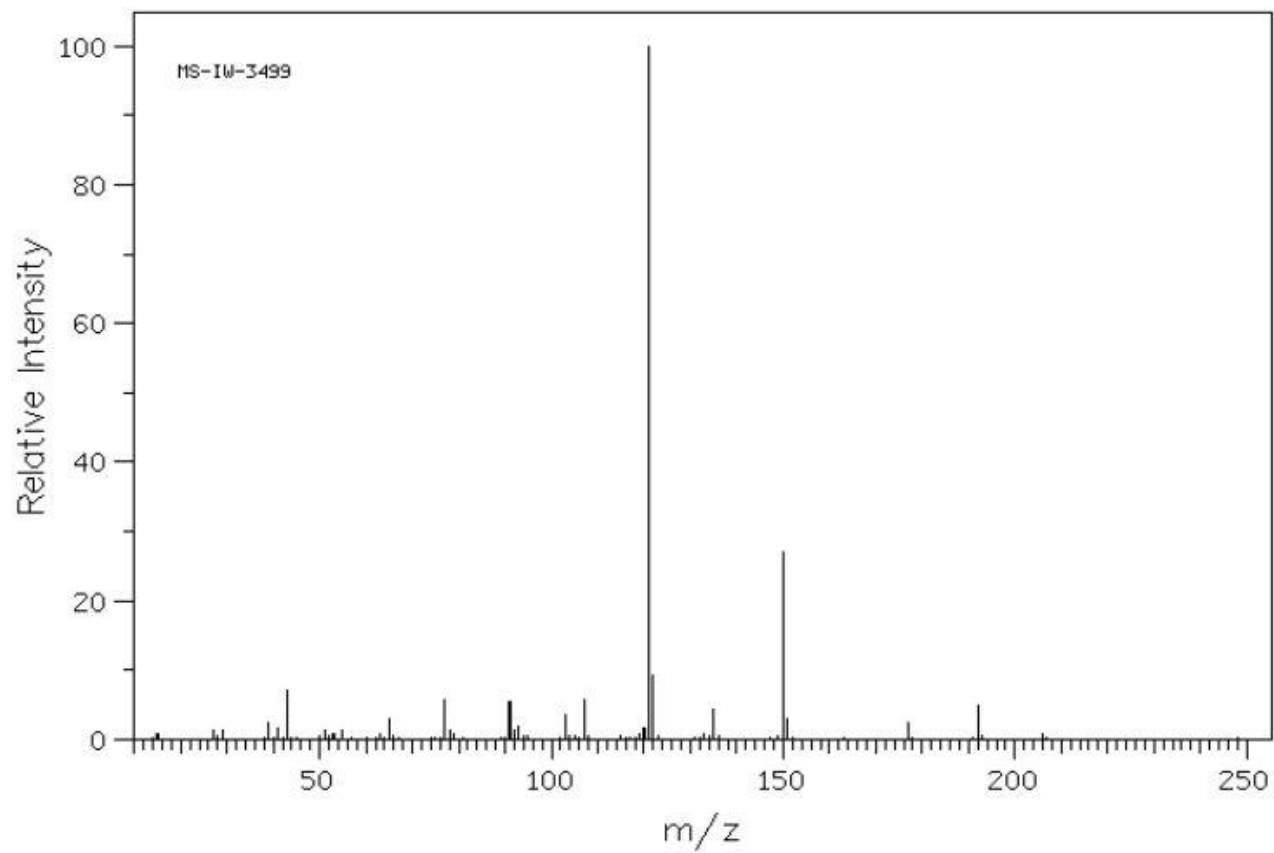




^{13}C -NMR (100 MHz, CDCl_3)



MS (EI)



m/z	Intensità (%)
43.0	7.1
121.0	100
122.0	9.3
150.0	27.1