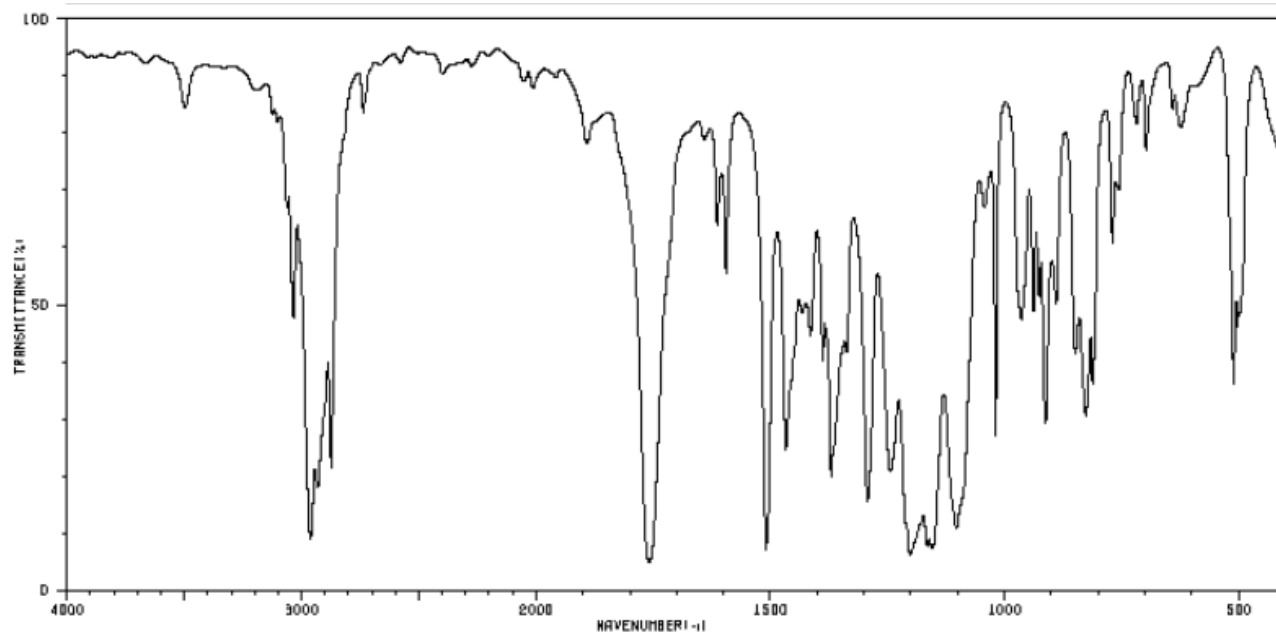


Analisi Elementare: C, 74.97; H, 8.39;

Massa esatta: m/z 192.1150 (100.00%)      193.1184 (13.24%)

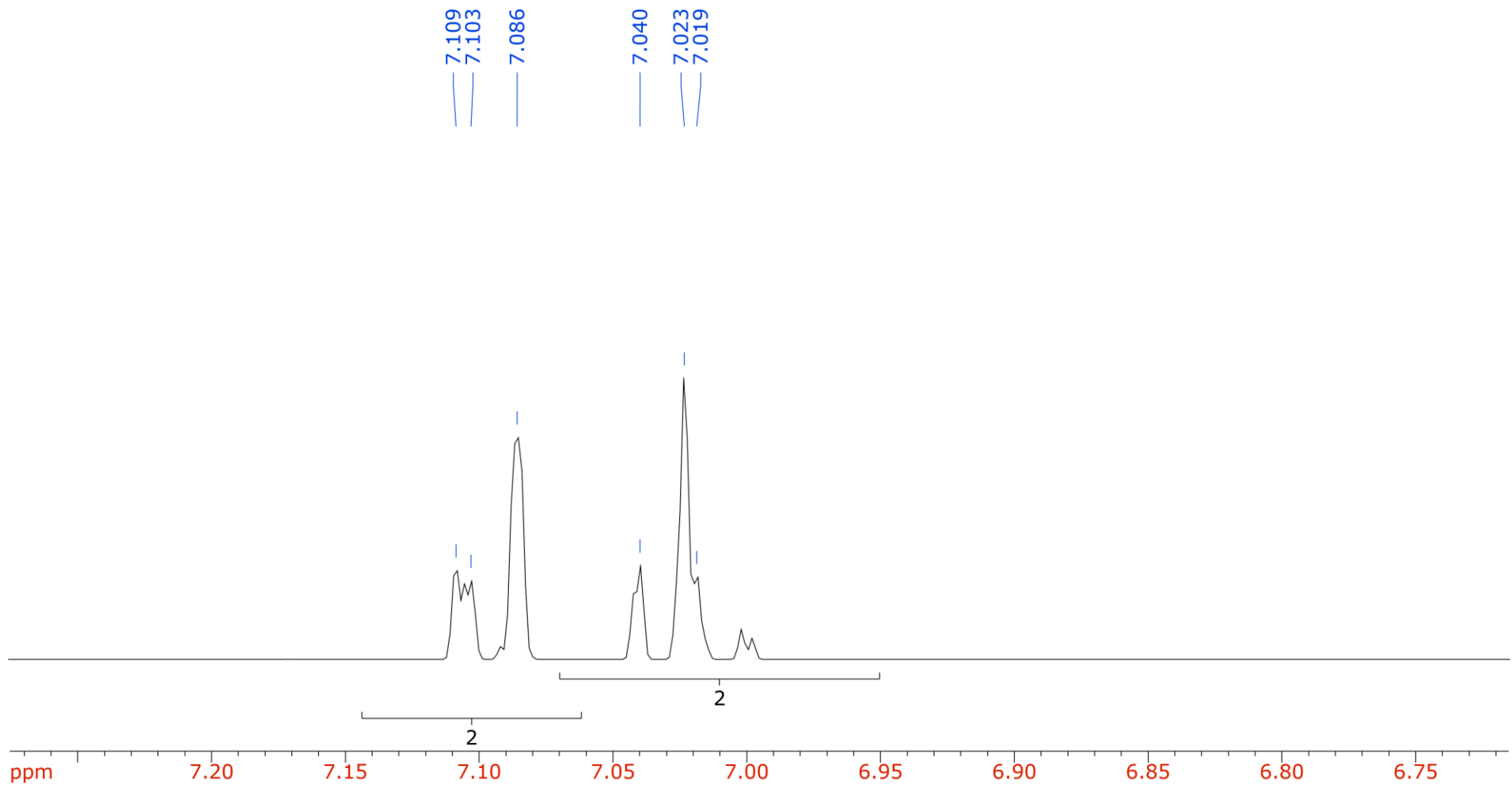
### Spettro IR ( KBr)

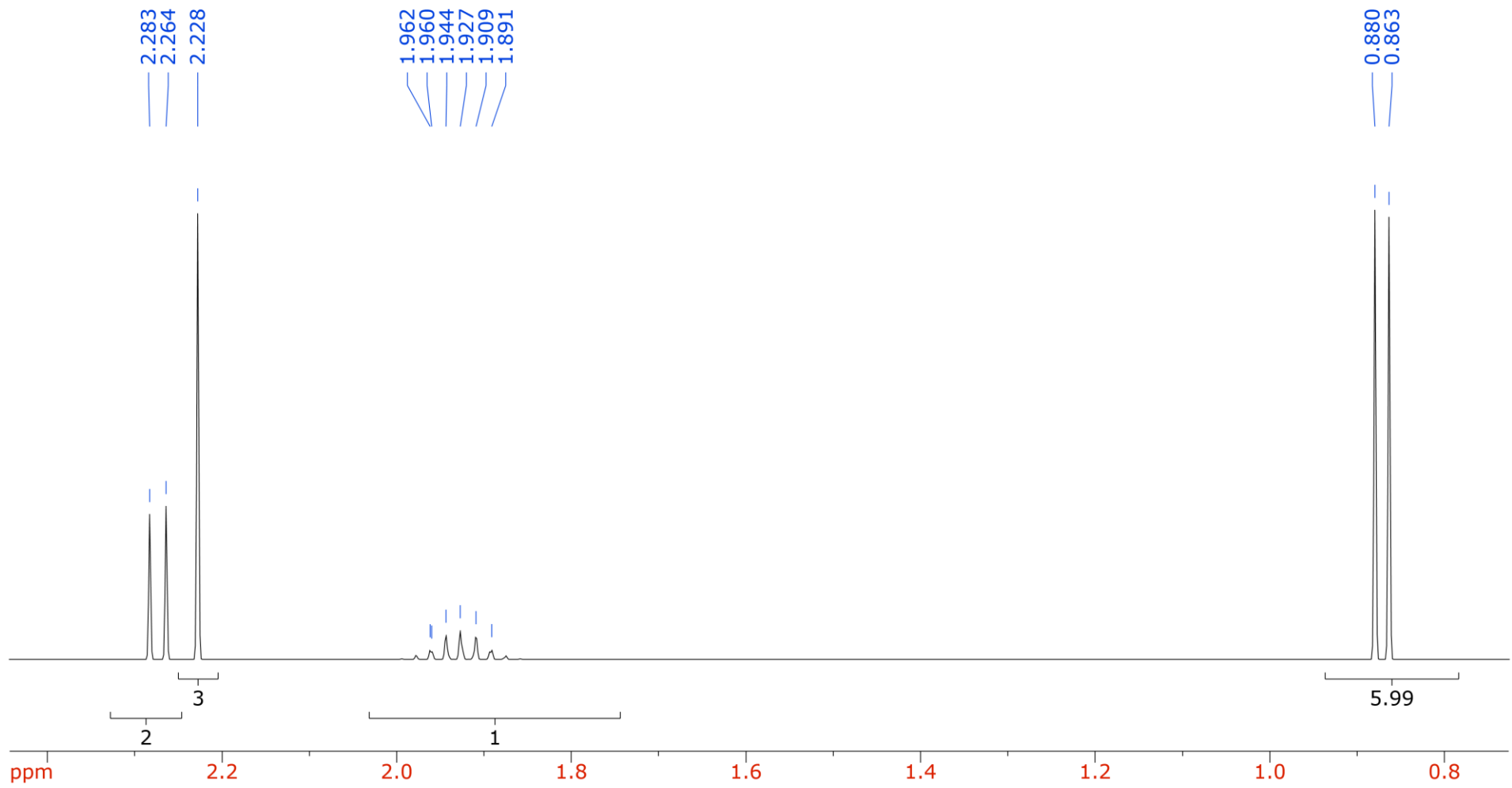


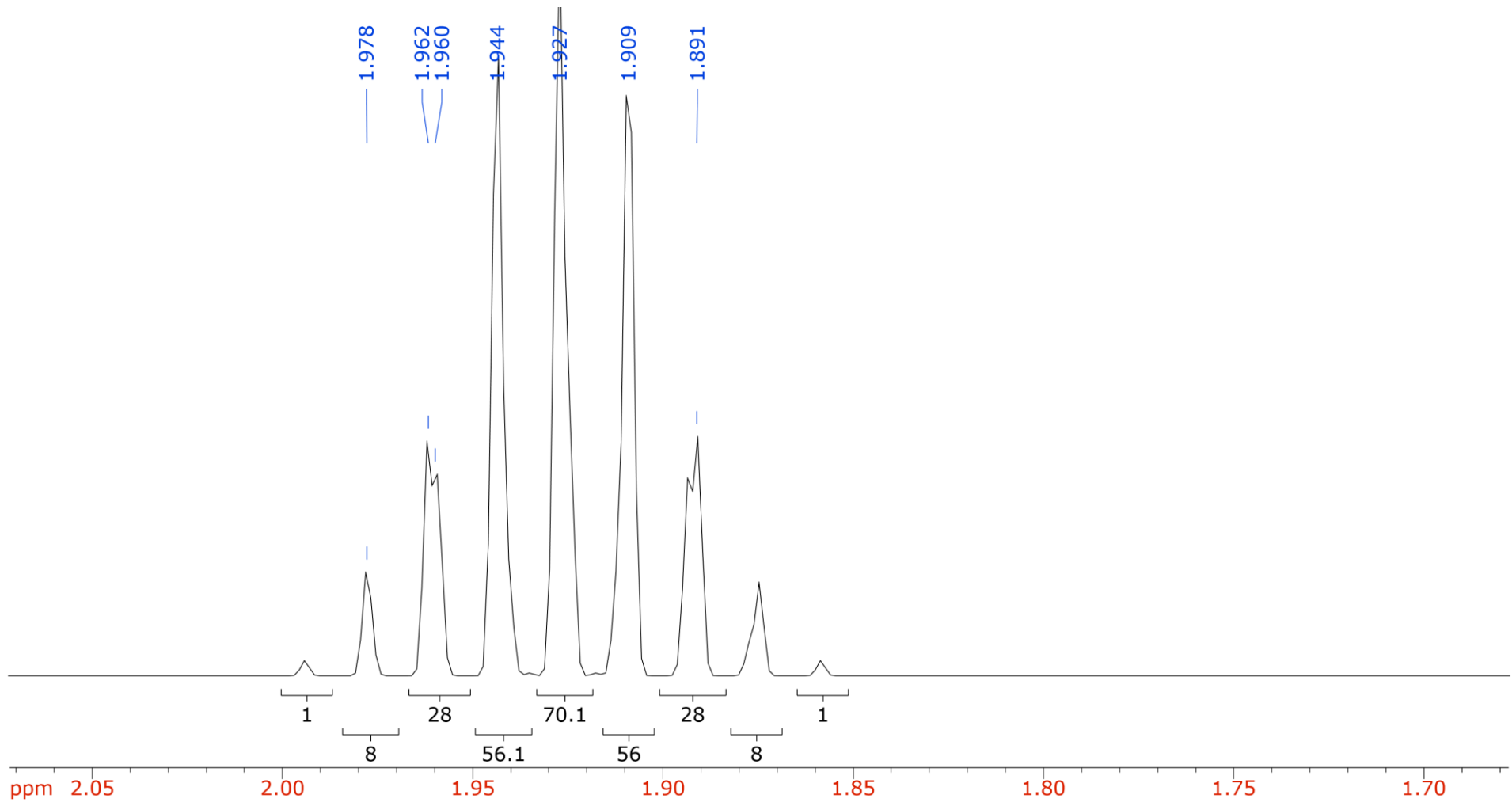
3062	64	1594	59	1337	39	1043	64	849	39
3034	46	1509	7	1293	14	1019	26	827	29
2962	8	1467	25	1244	20	963	46	812	34
2930	17	1432	46	1202	6	938	47	770	68
2873	20	1415	43	1166	7	926	49	757	68
1759	4	1388	38	1155	7	913	28	511	35
1613	62	1370	19	1103	10	890	47	603	44

$^1\text{H-NMR}$  ( 400 MHz,  $\text{CDCl}_3$ )

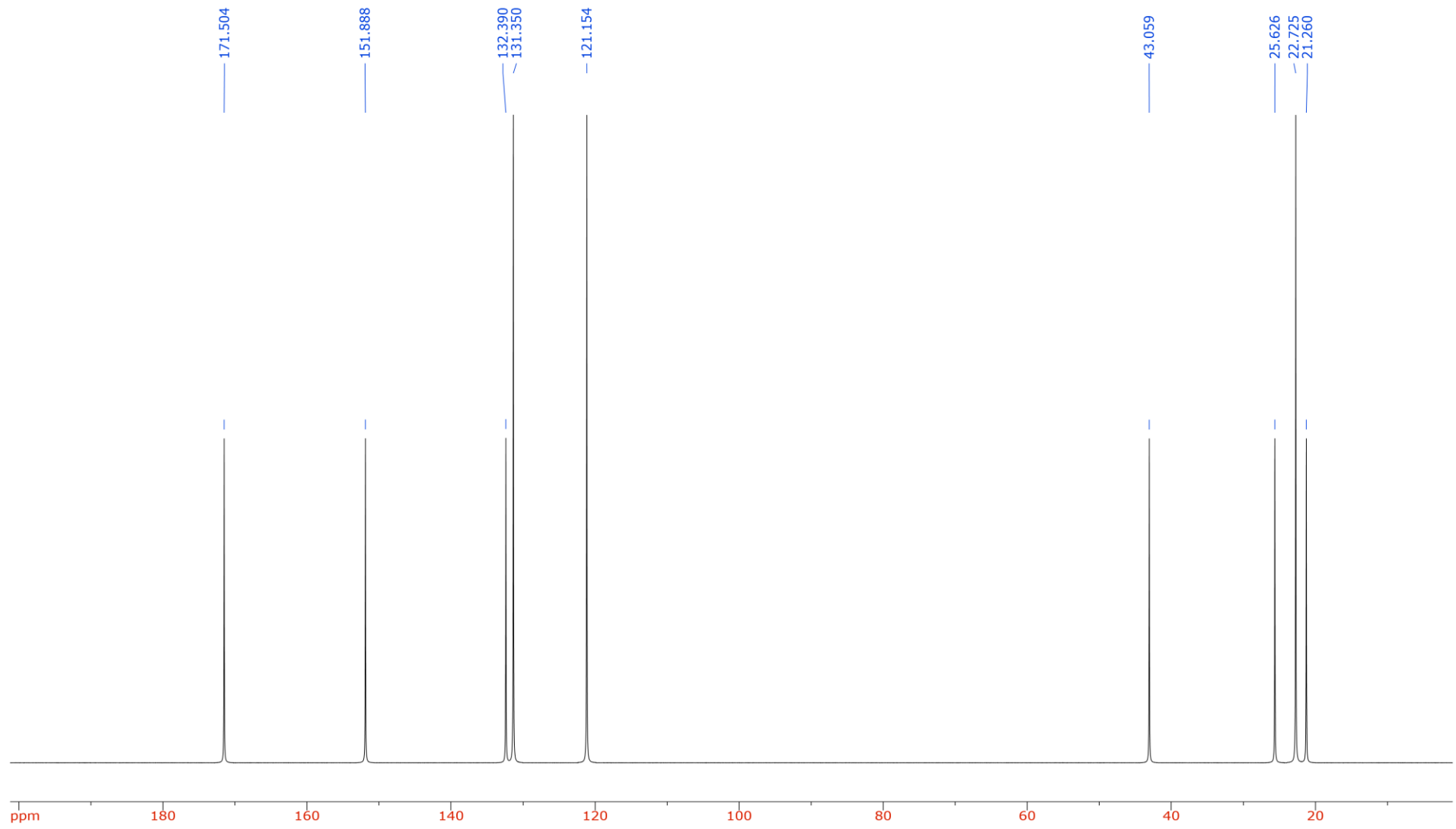








<sup>13</sup>C-NMR ( 100 MHz, CDCl<sub>3</sub>)



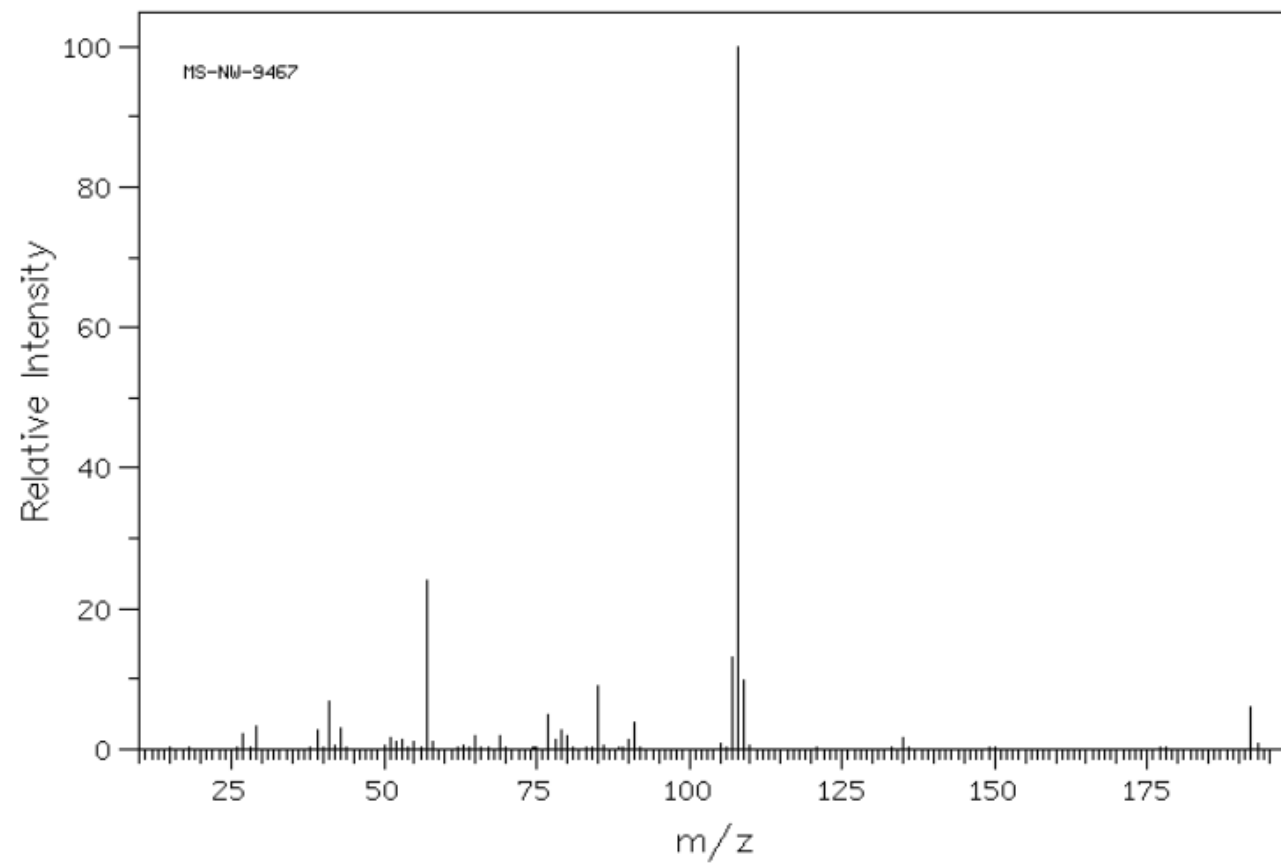
+ +  
+

- + ++

DEPT 90  
DEPT 135

A6

MS (EI)



m/z	Intensità (%)
57.0	23.9
85.0	9.1
107.0	13.0
108.0	100
109.0	9.8