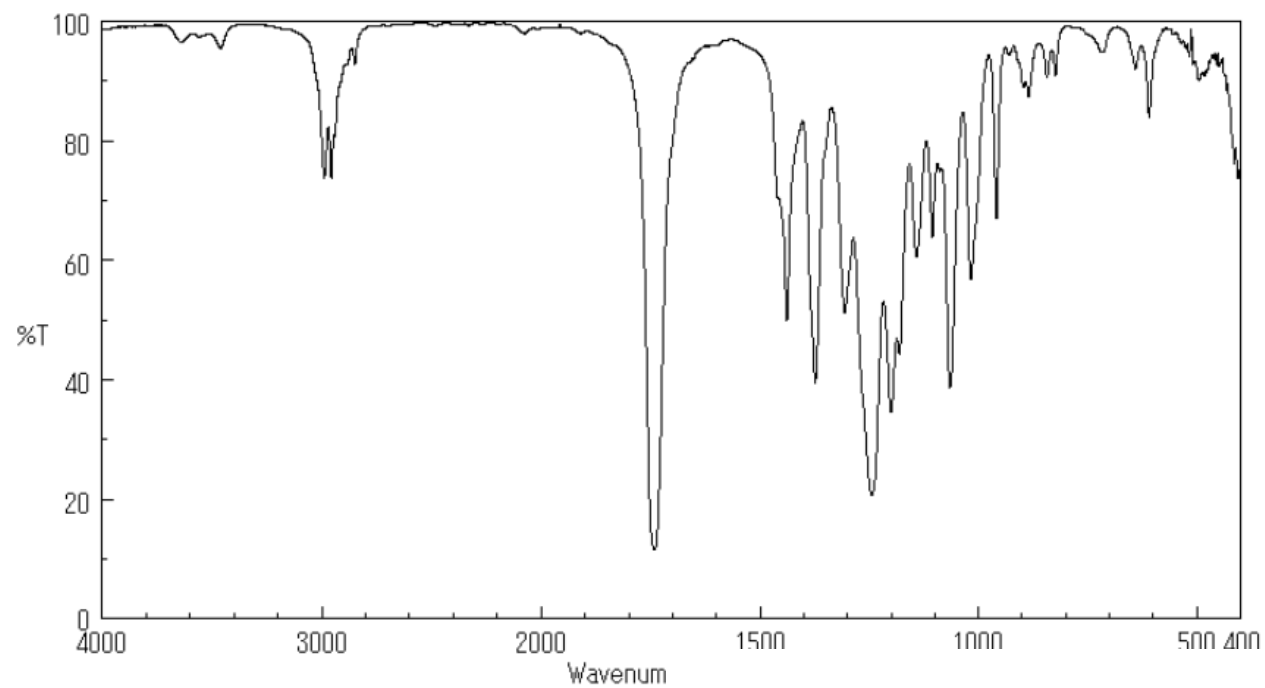


Analisi Elementare: C, 52.49; H, 7.55;

Massa esatta: m/z 160.0736 (100.00%) 161.0770 (7.86%)

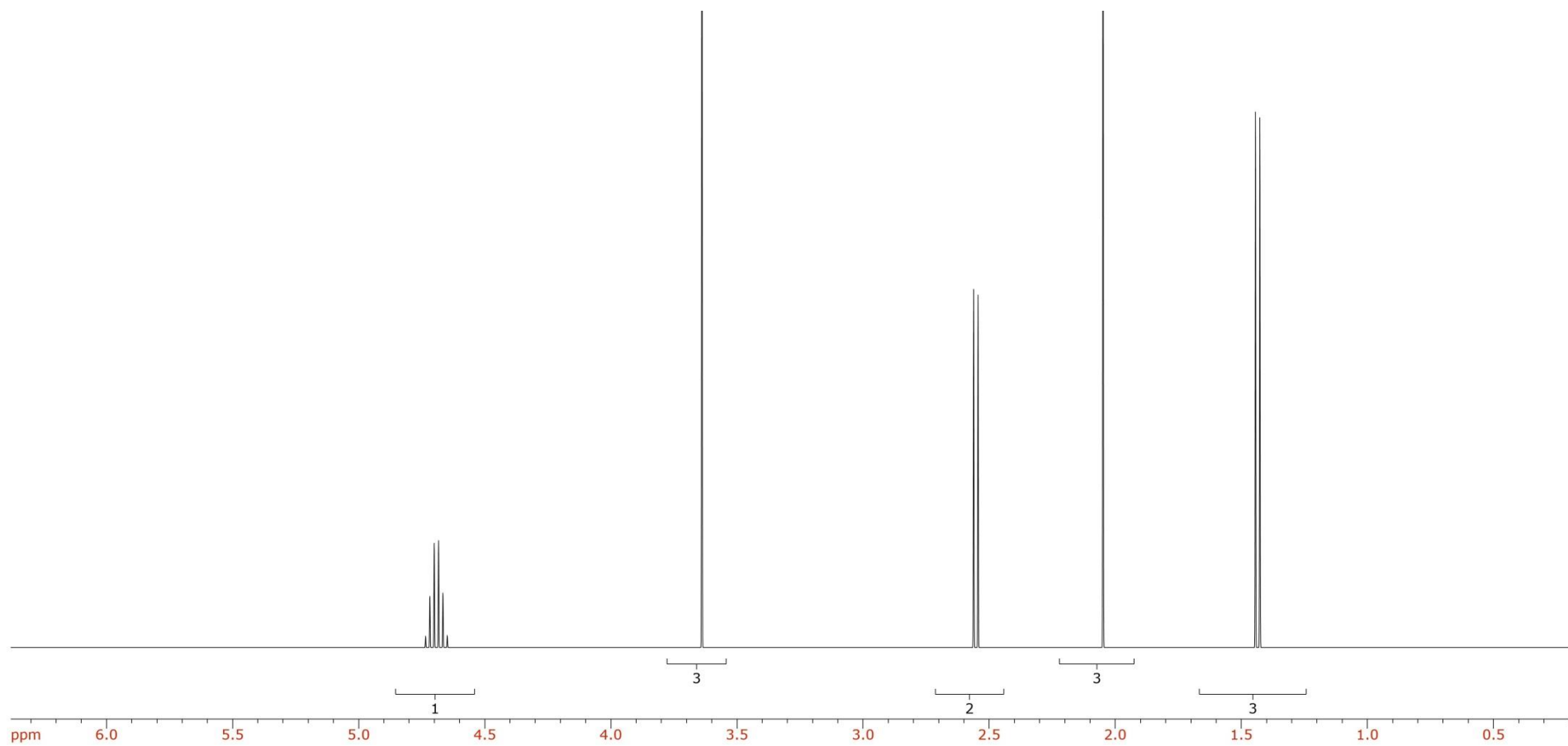
Spettro IR (KBr)

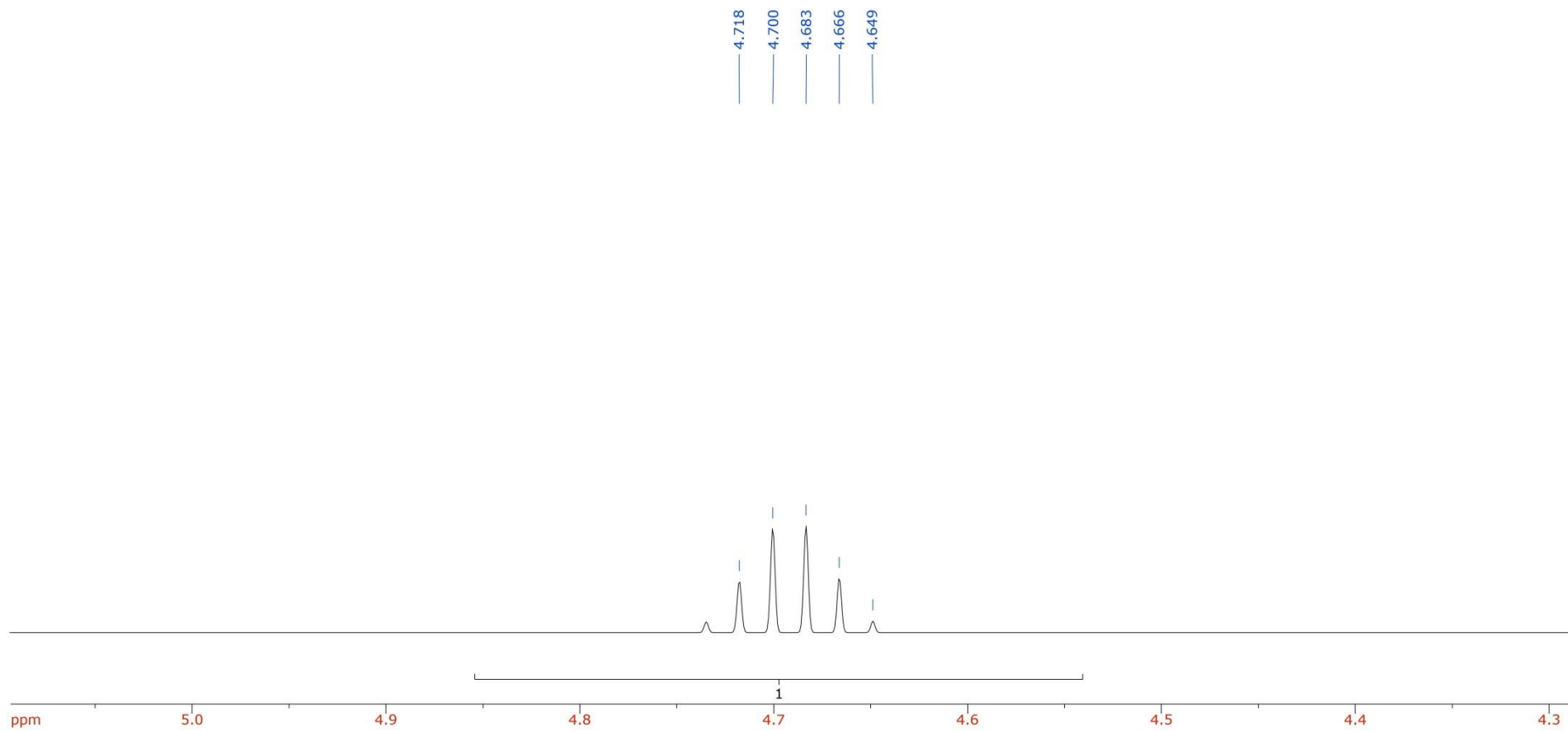


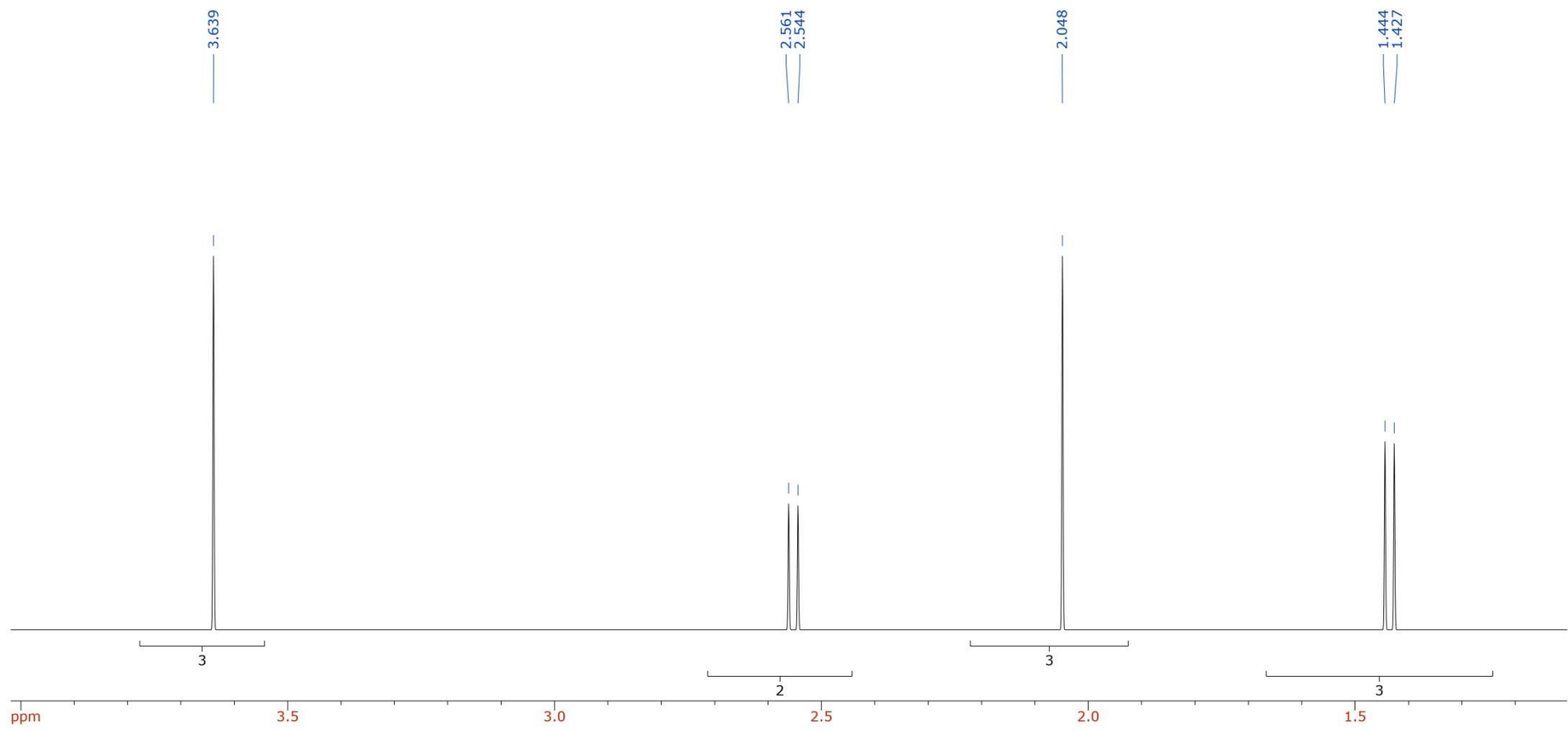
Wave number (cm⁻¹) and Transmittance (T%)

2988 74	1306 51	1065 39	609 84
2956 74	1244 21	1017 57	
1742 12	1200 35	958 67	
1438 50	1142 61	885 87	
1374 40	1105 64	843 91	

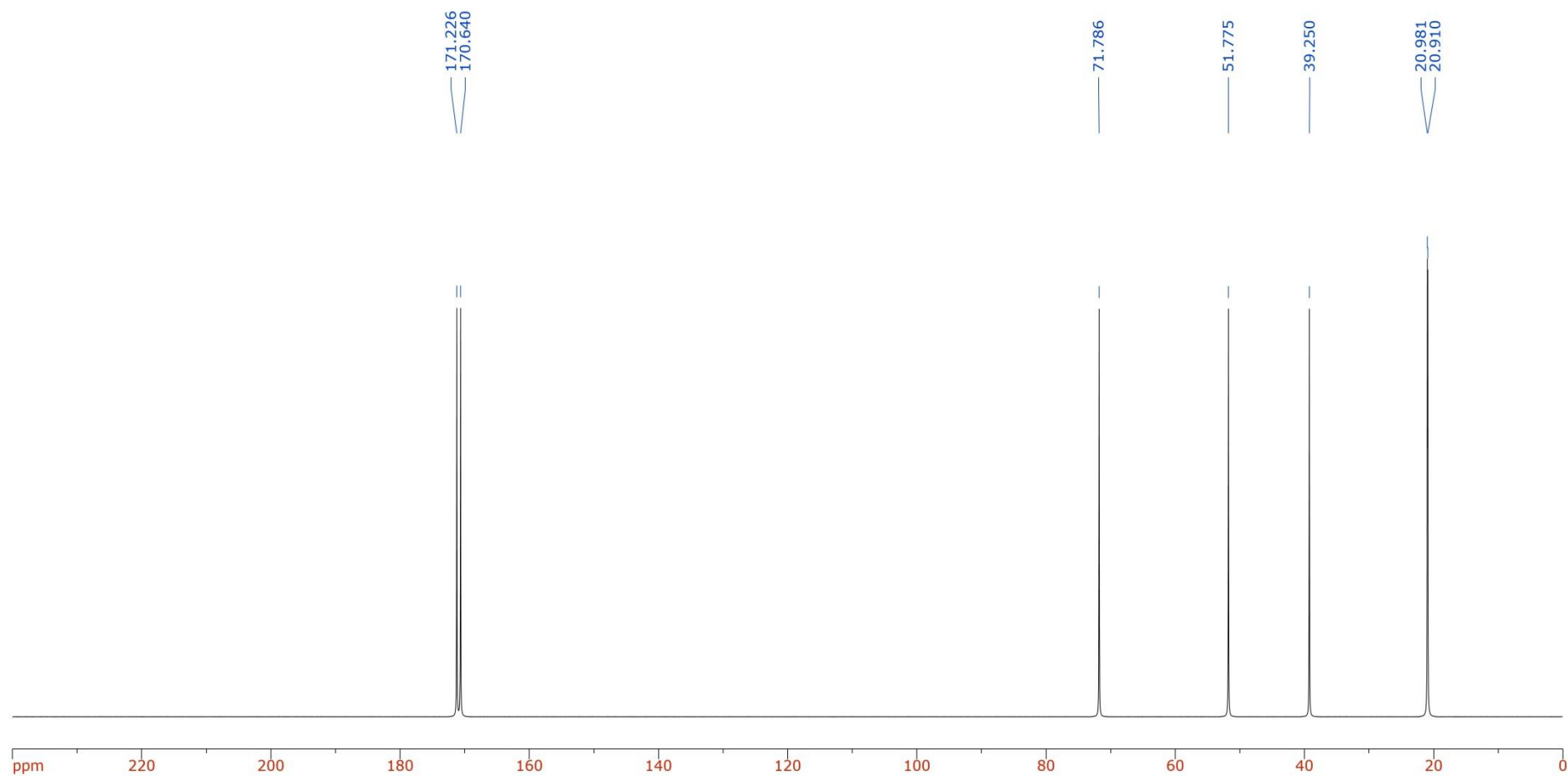
$^1\text{H-NMR}$ (400 MHz, CDCl_3)







^{13}C -NMR (100 MHz, CDCl_3)

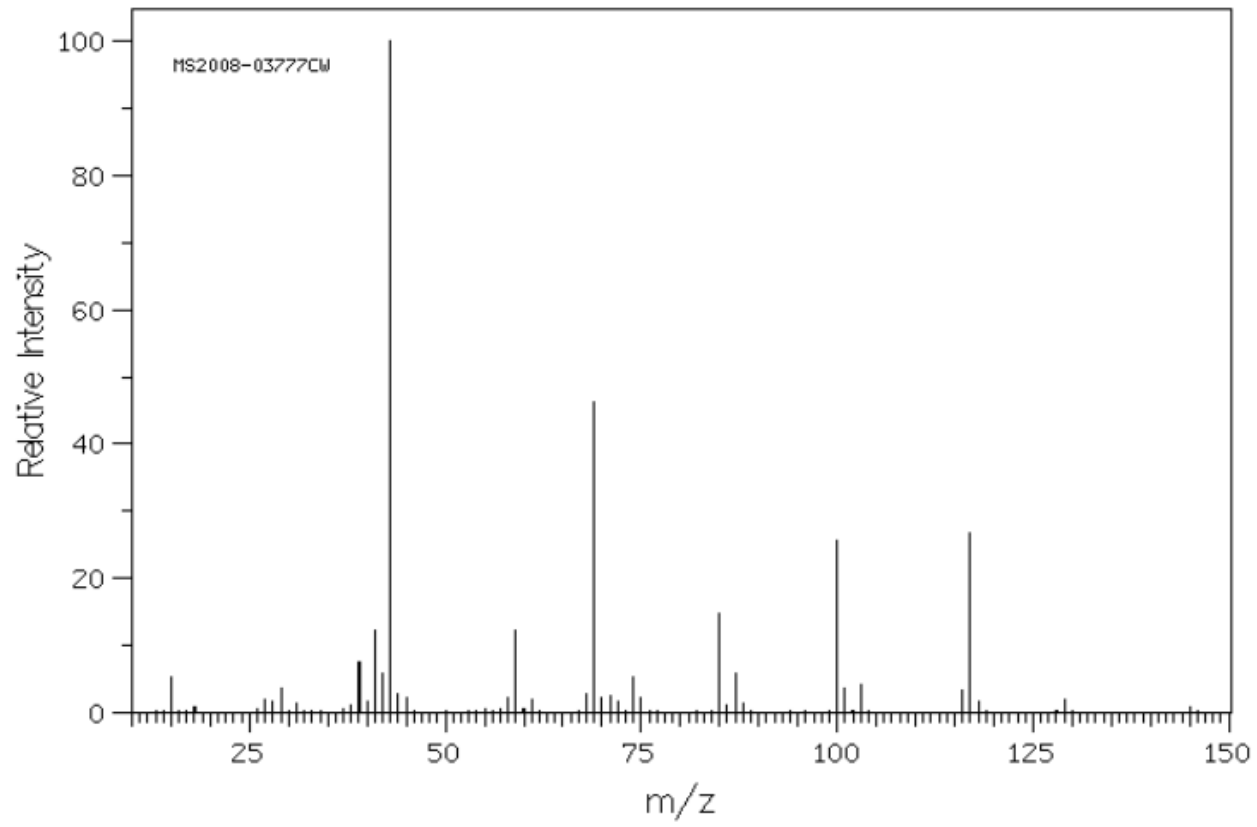


+
+ + - ++

DEPT 90
DEPT 135

A5

MS (EI)



<i>m/z</i>	Intensità (%)
41.0	12.3
43.0	100.0
59.0	12.0
69.0	46.2
85.0	14.6
100.0	25.7
117.0	26.6