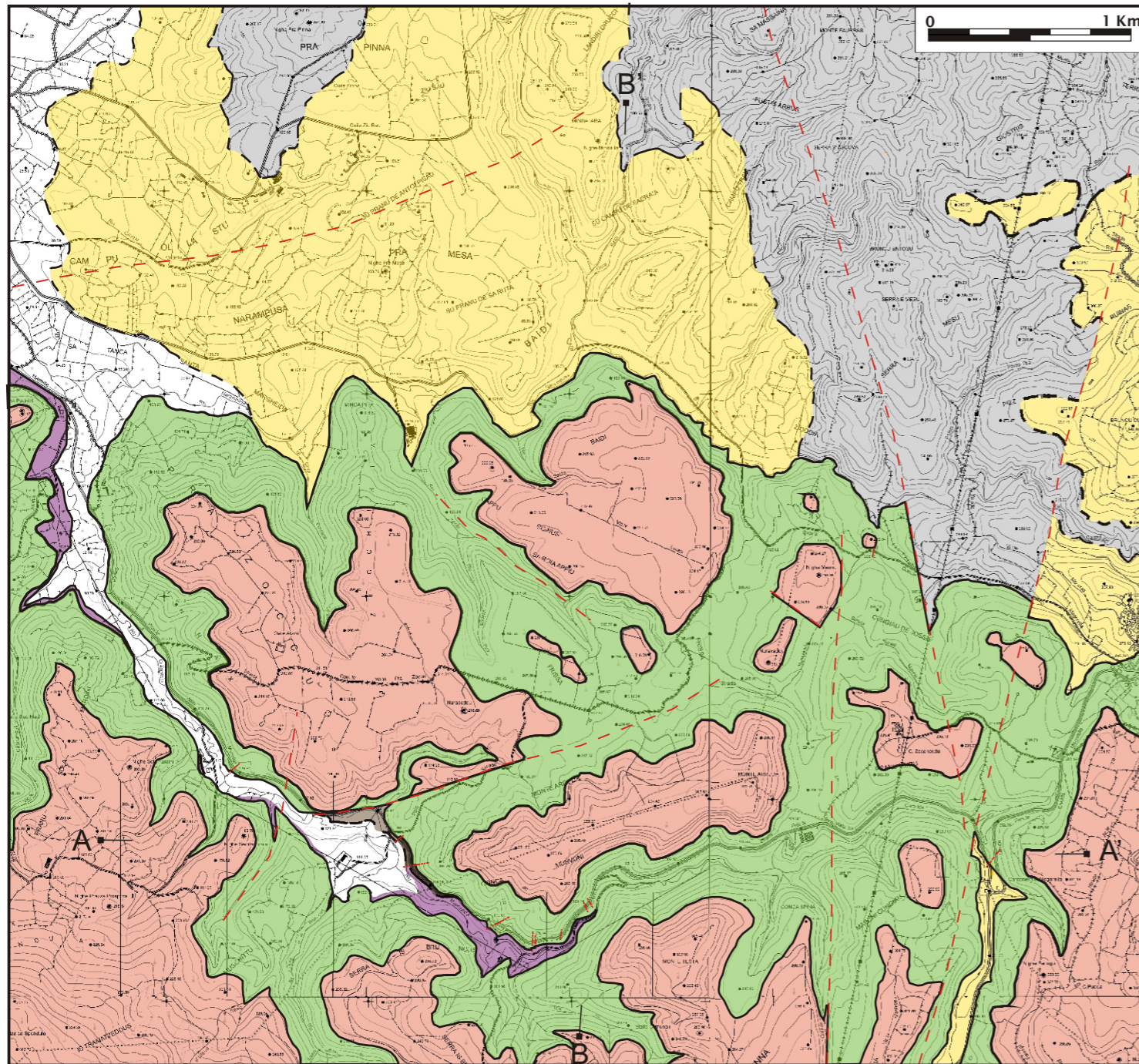


EXERCICE # 3: Stratigraphic reconstruction

The aim of this exercise is to reconstruct a general stratigraphic column from the sedimentary succession summarised in the map

- (1) Try to understand the reciprocal relative age of the various stratigraphic units;
- (2) Evaluate the nature of the bounding surfaces separating each stratigraphic units (conformity, unconformity, etc ...);
- (3) Detect the average thickness of each unit;
- (4) Reconstruct the general stratigraphic column of the sedimentary succession filling this mini-basin.



LEGEND

- FAN-DELTA CONGLOMERATES
- MAGMATIC/METAMORPHIC UNITS
- TIDAL SANDSTONES
- SHOREFACE SANDSTONES
- FLUVIAL SANDSTONES
- OFFHSORE MARLSTONES

arrange the various units in their correct stratigraphic order

↓

reconstrcut the general stratigraphic column

→

